

Product datasheet for **TA356038**

Klhl12 Rabbit Polyclonal Antibody

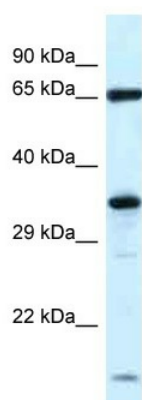
Product data:

| | |
|-------------------------|--|
| Product Type: | Primary Antibodies |
| Applications: | WB |
| Reactivity: | Rat |
| Host: | Rabbit |
| Clonality: | Polyclonal |
| Specificity: | Expected reactivity: Cow, Dog, Guinea Pig, Horse, Human, Mouse, Rabbit, Rat, Zebrafish Homology: Cow: 100%; Dog: 100%; Guinea Pig: 100%; Horse: 100%; Human: 100%; Mouse: 100%; Rabbit: 100%; Rat: 100%; Zebrafish: 85% |
| Formulation: | Liquid. Purified antibody supplied in 1x PBS buffer with 0.09% (w/v) sodium azide and 2% sucrose. <i>Note that this product is shipped as lyophilized powder to China customers.</i> |
| Concentration: | lot specific |
| Purification: | Affinity Purified |
| Conjugation: | Unconjugated |
| Storage: | For short term use, store at 2-8°C up to 1 week. For long term storage, store at -20°C in small aliquots to prevent freeze-thaw cycles. |
| Stability: | Shelf life: one year from despatch. |
| Predicted Protein Size: | 62kDa |
| Gene Name: | kelch-like family member 12 |
| Database Link: | NP_714952 Entrez Gene 266772 Rat Q8R2H4 |
| Background: | Klhl12 serves as a substrate-specific adapter for the CUL3-based ubiquitin-protein E3 ligase complex. It negatively regulates the Wnt signaling pathway via the targeted ubiquitination and subsequent proteolysis of DVL3. |
| Synonyms: | C3IP1; DKIR; FLJ27152 |



[View online »](#)

Product images:



WB Suggested Anti-Klh12 Antibody
Titration: 1.0 ug/ml
Positive Control: Rat Brain