

Product datasheet for **TA356036**

CBX4 Rabbit Polyclonal Antibody

Product data:

Product Type:	Primary Antibodies
Applications:	WB
Reactivity:	Human, Mouse
Host:	Rabbit
Clonality:	Polyclonal
Immunogen:	The immunogen is a synthetic peptide directed towards the middle region of Human CBX4
Specificity:	Expected reactivity: Cow, Dog, Guinea Pig, Horse, Human, Mouse, Rabbit, Rat, Zebrafish Homology: Cow: 100%; Dog: 100%; Guinea Pig: 100%; Horse: 100%; Human: 100%; Mouse: 100%; Rabbit: 100%; Rat: 100%; Zebrafish: 100%
Formulation:	Liquid. Purified antibody supplied in 1x PBS buffer with 0.09% (w/v) sodium azide and 2% sucrose. <i>Note that this product is shipped as lyophilized powder to China customers.</i>
Concentration:	lot specific
Purification:	Affinity Purified
Conjugation:	Unconjugated
Storage:	For short term use, store at 2-8°C up to 1 week. For long term storage, store at -20°C in small aliquots to prevent freeze-thaw cycles.
Stability:	Shelf life: one year from despatch.
Predicted Protein Size:	31kDa
Gene Name:	chromobox 4
Database Link:	Entrez Gene 8535 Human O00257-3
Background:	CBX4 is an E3 SUMO-protein ligase which facilitates SUMO1 conjugation by UBE2I. It is involved in the sumoylation of HNRNPK, a p53/TP53 transcriptional coactivator, hence indirectly regulates p53/TP53 transcriptional activation resulting in p21/CDKN1A expression. It monosumoylates ZNF131.
Synonyms:	hPC2; NBP16; PC2

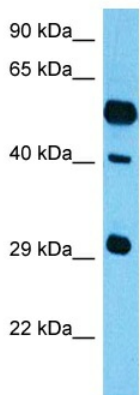


[View online »](#)

Product images:



Host: Rabbit
 Target Name: CBX4
 Sample Type: Fetal Brain lysates
 Antibody Dilution: 1.0ug/ml



Host: Rabbit
 Target Name: Cbx8
 Sample Type: Mouse Brain Lysate
 Antibody Dilution: 1.0µg/ml

Host: Mouse
 Target Name: CBX8
 Sample Tissue: Mouse Brain
 Antibody Dilution: 1ug/ml