

Product datasheet for **TA356033**

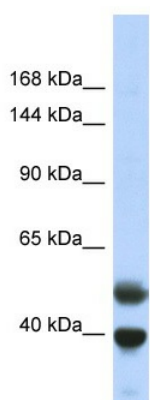
PRDM7 Rabbit Polyclonal Antibody

Product data:

Product Type:	Primary Antibodies
Applications:	WB
Reactivity:	Human
Host:	Rabbit
Clonality:	Polyclonal
Immunogen:	The immunogen is a synthetic peptide directed towards the N-terminal region of Human PRDM7
Specificity:	Expected reactivity: Cow, Horse, Human, Mouse, Pig, Rabbit, Rat Homology: Cow: 86%; Horse: 100%; Human: 100%; Mouse: 77%; Pig: 100%; Rabbit: 100%; Rat: 77%
Formulation:	Liquid. Purified antibody supplied in 1x PBS buffer with 0.09% (w/v) sodium azide and 2% sucrose.
Concentration:	lot specific
Purification:	Affinity Purified
Conjugation:	Unconjugated
Storage:	For short term use, store at 2-8°C up to 1 week. For long term storage, store at -20°C in small aliquots to prevent freeze-thaw cycles.
Stability:	Shelf life: one year from despatch.
Predicted Protein Size:	44kDa
Gene Name:	PR domain 7
Database Link:	Entrez Gene 11105 Human Q9NQW5-1
Background:	The protein encoded by this gene is a transcription factor of the PR-domain protein family. It contains a PR-domain and multiple zinc finger motifs. Transcription factors of the PR-domain family are known to be involved in cell differentiation and tumorigenesis. Alternative splicing results in multiple transcript variants encoding distinct isoforms.
Synonyms:	MGC129525; PFM4



[View online »](#)

Product images:

Host: Rabbit
Target Name: PRDM7
Sample Type: Fetal Lung lysates
Antibody Dilution: 1.0ug/ml