

Product datasheet for **TA356032**

ZNF280D Rabbit Polyclonal Antibody

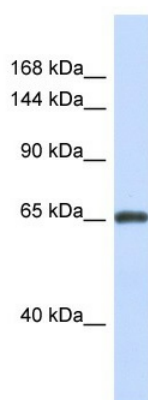
Product data:

Product Type:	Primary Antibodies
Applications:	IHC, WB
Reactivity:	Human
Host:	Rabbit
Clonality:	Polyclonal
Immunogen:	The immunogen is a synthetic peptide directed towards the N-terminal region of Human ZNF280D
Specificity:	Expected reactivity: Cow, Dog, Guinea Pig, Horse, Human, Mouse, Rabbit, Rat Homology: Cow: 91%; Dog: 100%; Guinea Pig: 100%; Horse: 100%; Human: 100%; Mouse: 93%; Rabbit: 100%; Rat: 93%
Formulation:	Liquid. Purified antibody supplied in 1x PBS buffer with 0.09% (w/v) sodium azide and 2% sucrose.
Concentration:	lot specific
Purification:	Affinity Purified
Conjugation:	Unconjugated
Storage:	For short term use, store at 2-8°C up to 1 week. For long term storage, store at -20°C in small aliquots to prevent freeze-thaw cycles.
Stability:	Shelf life: one year from despatch.
Predicted Protein Size:	65kDa
Gene Name:	zinc finger protein 280D
Database Link:	Entrez Gene 54816 Human Q6N043-3
Background:	ZNF280D may function as a transcription factor.
Synonyms:	FLJ20086; KIAA1584; MGC21637; MGC61687; SUHW4; ZNF634

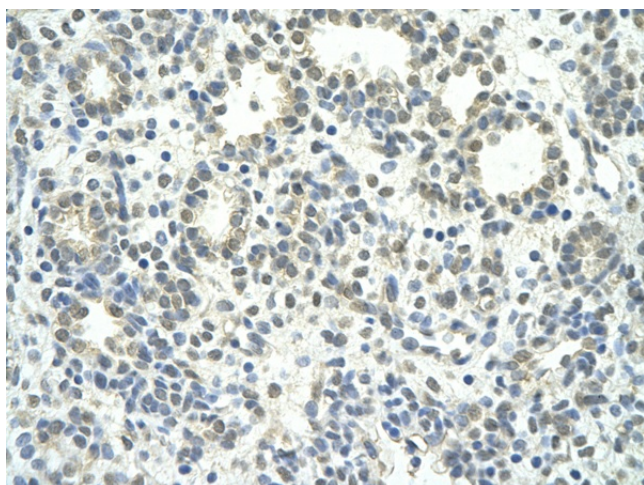


[View online »](#)

Product images:



Host: Rabbit
Target Name: ZNF280D
Sample Type: Fetal Brain lysates
Antibody Dilution: 1.0ug/ml



Rabbit Anti-ZNF280D antibody
Catalog Number: ARP39301
Paraffin Embedded Tissue: Human Lung
cell Cellular Data: alveolar cell
Antibody Concentration: 4.0-8.0 ug/ml
Magnification: 400X