

Product datasheet for **TA356027**

Zfr Rabbit Polyclonal Antibody

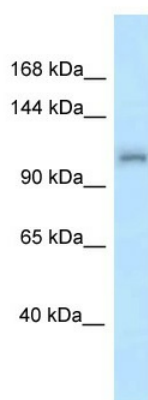
Product data:

Product Type:	Primary Antibodies
Applications:	IHC, WB
Reactivity:	Mouse
Host:	Rabbit
Clonality:	Polyclonal
Specificity:	Expected reactivity: Dog, Human, Mouse, Rabbit, Rat, Zebrafish Homology: Dog: 100%; Human: 100%; Mouse: 100%; Rabbit: 100%; Rat: 100%; Zebrafish: 100%
Formulation:	Liquid. Purified antibody supplied in 1x PBS buffer with 0.09% (w/v) sodium azide and 2% sucrose.
Concentration:	lot specific
Purification:	Affinity Purified
Conjugation:	Unconjugated
Storage:	For short term use, store at 2-8°C up to 1 week. For long term storage, store at -20°C in small aliquots to prevent freeze-thaw cycles.
Stability:	Shelf life: one year from despatch.
Predicted Protein Size:	114kDa
Gene Name:	zinc finger RNA binding protein
Database Link:	NP_035897 Entrez Gene 22763 Mouse B2RUG7
Background:	The function of this protein remains unknown.
Synonyms:	FLJ41312; hZFR; ZFR1

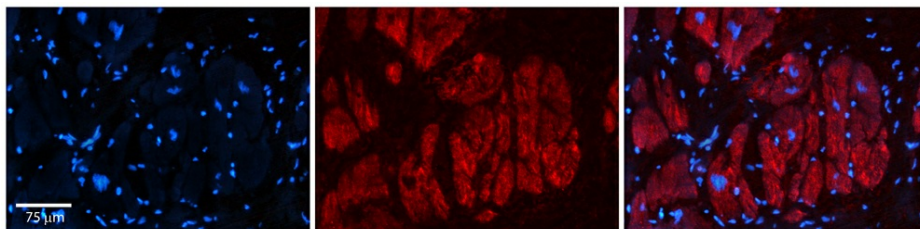


[View online »](#)

Product images:



WB Suggested Anti-Zfr Antibody
Titration: 1.0 ug/ml
Positive Control: Mouse Liver



Rabbit Anti-Zfr Antibody
Catalog Number: TA356027
Formalin Fixed Paraffin Embedded Tissue:
Human Adult heart
Observed Staining: Cytoplasmic
Primary Antibody Concentration: 1:600
Secondary Antibody: Donkey anti-Rabbit-Cy2/3
Secondary Antibody Concentration: 1:200
Magnification: 20X
Exposure Time: 0.5–2.0 sec
Protocol located in Reviews and Data.