

Product datasheet for TA356025

PHF15 (JADE2) Rabbit Polyclonal Antibody

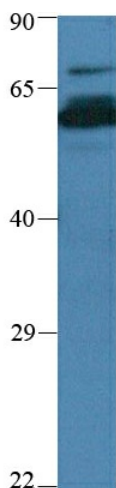
Product data:

Product Type:	Primary Antibodies
Applications:	WB
Reactivity:	Human
Host:	Rabbit
Clonality:	Polyclonal
Immunogen:	The immunogen is a synthetic peptide directed towards the N-terminal region of human JADE2
Specificity:	Expected reactivity: Cow, Dog, Guinea Pig, Horse, Human, Mouse, Rabbit, Rat, Zebrafish Homology: Cow: 100%; Dog: 100%; Guinea Pig: 100%; Horse: 100%; Human: 100%; Mouse: 100%; Rabbit: 100%; Rat: 100%; Zebrafish: 77%
Formulation:	Liquid. Purified antibody supplied in 1x PBS buffer with 0.09% (w/v) sodium azide and 2% sucrose. <i>Note that this product is shipped as lyophilized powder to China customers.</i>
Concentration:	lot specific
Purification:	Affinity Purified
Conjugation:	Unconjugated
Storage:	For short term use, store at 2-8°C up to 1 week. For long term storage, store at -20°C in small aliquots to prevent freeze-thaw cycles.
Stability:	Shelf life: one year from despatch.
Predicted Protein Size:	63kDa
Gene Name:	jade family PHD finger 2
Database Link:	NP_001276913.1 Entrez Gene 23338 Human Q9NQC1
Protein Families:	Druggable Genome, Transcription Factors



[View online »](#)

Product images:



Host: Rabbit
Target Name: PHF15
Sample Type: Human Muscle
Antibody Dilution: 1 ug/ml

Host: Rabbit
Target Name: PHF15
Sample Type: Human muscle
Antibody Dilution: 1.0ug/ml