

Product datasheet for **TA356023**

PHF16 (JADE3) Rabbit Polyclonal Antibody

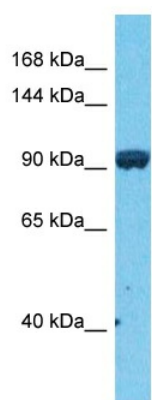
Product data:

Product Type:	Primary Antibodies
Applications:	WB
Reactivity:	Human
Host:	Rabbit
Clonality:	Polyclonal
Immunogen:	The immunogen is a synthetic peptide directed towards the C-terminal region of Human JADE3
Specificity:	Expected reactivity: Cow, Dog, Guinea Pig, Horse, Human, Mouse, Rabbit, Rat Homology: Cow: 92%; Dog: 92%; Guinea Pig: 93%; Horse: 92%; Human: 100%; Mouse: 83%; Rabbit: 85%; Rat: 100%
Formulation:	Liquid. Purified antibody supplied in 1x PBS buffer with 0.09% (w/v) sodium azide and 2% sucrose.
Concentration:	lot specific
Purification:	Affinity purified
Conjugation:	Unconjugated
Storage:	For short term use, store at 2-8°C up to 1 week. For long term storage, store at -20°C in small aliquots to prevent freeze-thaw cycles.
Stability:	Shelf life: one year from despatch.
Predicted Protein Size:	90kDa
Gene Name:	jade family PHD finger 3
Database Link:	NP_055550 Entrez Gene 9767 Human Q92613
Background:	This gene encodes a member of a family of large proteins containing PHD (plant homeo domain)-type zinc fingers. The encoded protein may be associated in a nuclear complex that functions in histone H4 acetylation. Alternative splicing results in multiple transcript variants encoding the same protein.



[View online »](#)

Product images:



Host: Rabbit
Target Name: JADE3
Sample Tissue: COLO205 Cell Lysate
Antibody Dilution: 1.0 μ g/ml

Host: Rabbit
Target Name: JADE3
Sample Type: COLO205 Whole Cell lysates
Antibody Dilution: 1.0 μ g/ml