

Product datasheet for **TA356016**

UBF1 (UBTF) Rabbit Polyclonal Antibody

Product data:

Product Type:	Primary Antibodies
Applications:	WB
Reactivity:	Human
Host:	Rabbit
Clonality:	Polyclonal
Immunogen:	The immunogen is a synthetic peptide directed towards the C-terminal region of Human UBF1
Specificity:	Expected reactivity: Cow, Dog, Horse, Human, Mouse, Pig, Rabbit, Rat, Yeast, Zebrafish Homology: Cow: 100%; Dog: 100%; Horse: 100%; Human: 100%; Mouse: 86%; Pig: 86%; Rabbit: 93%; Rat: 93%; Yeast: 86%; Zebrafish: 79%
Formulation:	Liquid. Purified antibody supplied in 1x PBS buffer with 0.09% (w/v) sodium azide and 2% sucrose. <i>Note that this product is shipped as lyophilized powder to China customers.</i>
Concentration:	lot specific
Purification:	Affinity Purified
Conjugation:	Unconjugated
Storage:	For short term use, store at 2-8°C up to 1 week. For long term storage, store at -20°C in small aliquots to prevent freeze-thaw cycles.
Stability:	Shelf life: one year from despatch.
Predicted Protein Size:	84kDa
Gene Name:	upstream binding transcription factor, RNA polymerase I
Database Link:	XP_006722124 Entrez Gene 7343 Human P17480



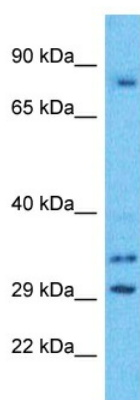
[View online »](#)

Background:

This gene encodes a member of the HMG-box DNA-binding protein family. The encoded protein plays a critical role in ribosomal RNA transcription as a key component of the pre-initiation complex, mediating the recruitment of RNA polymerase I to rDNA promoter regions. The encoded protein may also play important roles in chromatin remodeling and pre-rRNA processing, and its activity is regulated by both phosphorylation and acetylation. Alternatively spliced transcript variants encoding multiple isoforms have been observed for this gene. Pseudogenes of this gene are located on the short arm of chromosomes 3, 11 and X and the long arm of chromosome 11.

Synonyms:

NOR-90; UBF; UBF-1; UBF1

Product images:

Host: Rabbit
Target Name: UBTF
Sample Tissue: HeLa Cell Lysate
Antibody Dilution: 1.0 μ g/ml

Host: Rabbit
Target Name: UBF1
Sample Type: HeLa Whole Cell lysates
Antibody Dilution: 1.0 μ g/ml