

Product datasheet for **TA356012**

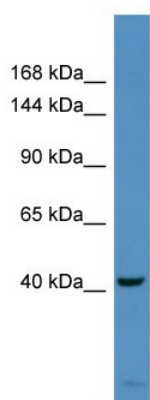
BAZ2B Rabbit Polyclonal Antibody

Product data:

Product Type:	Primary Antibodies
Applications:	WB
Reactivity:	Human
Host:	Rabbit
Clonality:	Polyclonal
Immunogen:	The immunogen is a synthetic peptide directed towards the middle region of human BAZ2B
Specificity:	Expected reactivity: Cow, Dog, Guinea Pig, Horse, Human, Rabbit, Rat Homology: Cow: 86%; Dog: 93%; Guinea Pig: 93%; Horse: 93%; Human: 100%; Rabbit: 93%; Rat: 86%
Formulation:	Liquid. Purified antibody supplied in 1x PBS buffer with 0.09% (w/v) sodium azide and 2% sucrose. <i>Note that this product is shipped as lyophilized powder to China customers.</i>
Concentration:	lot specific
Purification:	Affinity Purified
Conjugation:	Unconjugated
Storage:	For short term use, store at 2-8°C up to 1 week. For long term storage, store at -20°C in small aliquots to prevent freeze-thaw cycles.
Stability:	Shelf life: one year from despatch.
Predicted Protein Size:	48kDa
Gene Name:	bromodomain adjacent to zinc finger domain 2B
Database Link:	NP_001276904.1 Entrez Gene 29994 Human Q9UIF8
Synonyms:	DKFZp434H071; DKFZp762I0516; FLJ45644; hWALp4; KIAA1476; WALp4
Protein Families:	Druggable Genome



[View online »](#)

Product images:

Host: Rabbit
Target Name: DKFZp686H10114
Sample Type: COLO205 Whole cell lysates
Antibody Dilution: 1.0ug/ml