

Product datasheet for **TA356011**

SETDB1 Rabbit Polyclonal Antibody

Product data:

Product Type:	Primary Antibodies
Applications:	WB
Reactivity:	Human
Host:	Rabbit
Clonality:	Polyclonal
Immunogen:	The immunogen is a synthetic peptide directed towards the N-terminal region of Human SETDB1
Specificity:	Expected reactivity: Cow, Dog, Guinea Pig, Horse, Human, Rabbit, Rat Homology: Cow: 92%; Dog: 93%; Guinea Pig: 86%; Horse: 93%; Human: 100%; Rabbit: 85%; Rat: 86%
Formulation:	Liquid. Purified antibody supplied in 1x PBS buffer with 0.09% (w/v) sodium azide and 2% sucrose. <i>Note that this product is shipped as lyophilized powder to China customers.</i>
Concentration:	lot specific
Purification:	Affinity Purified
Conjugation:	Unconjugated
Storage:	For short term use, store at 2-8°C up to 1 week. For long term storage, store at -20°C in small aliquots to prevent freeze-thaw cycles.
Stability:	Shelf life: one year from despatch.
Predicted Protein Size:	43kDa
Gene Name:	SET domain bifurcated 1
Database Link:	Entrez Gene 9869 Human Q15047-2



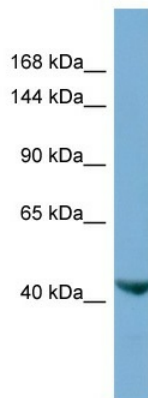
[View online »](#)

Background:

SETDB1 is a histone methyltransferase that specifically trimethylates 'Lys-9' of histone H3. H3 'Lys-9' trimethylation represents a specific tag for epigenetic transcriptional repression by recruiting HP1 (CBX1, CBX3 and/or CBX5) proteins to methylated histones. SETDB1 mainly functions in euchromatin regions, thereby playing a central role in the silencing of euchromatic genes. H3 'Lys-9' trimethylation is coordinated with DNA methylation. It probably forms a complex with MBD1 and ATF7IP that represses transcription and couples DNA methylation and histone 'Lys-9' trimethylation. Its activity is dependent on MBD1 and is heritably maintained through DNA replication by being recruited by CAF-1. SETDB1 is targeted to histone H3 by TRIM28/TIF1B, a factor recruited by KRAB zinc-finger proteins.

Synonyms:

ESET; H3-K9-HMTase4; KG1T; KIAA0067; KMT1E

Product images:

Host: Rabbit
Target Name: SETDB1
Sample Type: HT1080 Whole cell lysates
Antibody Dilution: 1.0ug/ml