

Product datasheet for **TA356004**

Hmg20b Rabbit Polyclonal Antibody

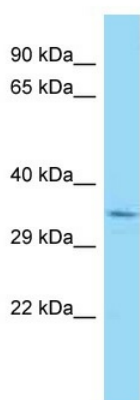
Product data:

Product Type:	Primary Antibodies
Applications:	WB
Reactivity:	Rat
Host:	Rabbit
Clonality:	Polyclonal
Specificity:	Expected reactivity: Cow, Dog, Guinea Pig, Horse, Human, Mouse, Rabbit, Rat, Yeast, Zebrafish Homology: Cow: 100%; Dog: 100%; Guinea Pig: 100%; Horse: 79%; Human: 100%; Mouse: 93%; Rabbit: 79%; Rat: 100%; Yeast: 82%; Zebrafish: 85%
Formulation:	Liquid. Purified antibody supplied in 1x PBS buffer with 0.09% (w/v) sodium azide and 2% sucrose. <i>Note that this product is shipped as lyophilized powder to China customers.</i>
Concentration:	lot specific
Purification:	Affinity Purified
Conjugation:	Unconjugated
Storage:	For short term use, store at 2-8°C up to 1 week. For long term storage, store at -20°C in small aliquots to prevent freeze-thaw cycles.
Stability:	Shelf life: one year from despatch.
Predicted Protein Size:	34kDa
Gene Name:	high mobility group 20 B
Database Link:	NP_001102201 Entrez Gene 362825 Rat D4A586
Background:	The function of this protein remains unknown.
Synonyms:	BRAF25; BRAF35; FLJ26127; HMGX2; HMGXB2; PP7706; pp8857; SMARCE1r; SOXL



[View online »](#)

Product images:



WB Suggested Anti-Hmg20b Antibody
Titration: 1.0 ug/ml
Positive Control: Rat Muscle