

Product datasheet for **TA356002**

Six1 Rabbit Polyclonal Antibody

Product data:

Product Type:	Primary Antibodies
Applications:	IHC, WB
Reactivity:	Mouse
Host:	Rabbit
Clonality:	Polyclonal
Specificity:	Expected reactivity: Cow, Dog, Guinea Pig, Horse, Human, Mouse, Rabbit, Rat, Sheep, Zebrafish Homology: Cow: 100%; Dog: 100%; Guinea Pig: 100%; Horse: 100%; Human: 100%; Mouse: 100%; Rabbit: 100%; Rat: 100%; Sheep: 100%; Zebrafish: 100%
Formulation:	Liquid. Purified antibody supplied in 1x PBS buffer with 0.09% (w/v) sodium azide and 2% sucrose. <i>Note that this product is shipped as lyophilized powder to China customers.</i>
Concentration:	lot specific
Purification:	Affinity Purified
Conjugation:	Unconjugated
Storage:	For short term use, store at 2-8°C up to 1 week. For long term storage, store at -20°C in small aliquots to prevent freeze-thaw cycles.
Stability:	Shelf life: one year from despatch.
Predicted Protein Size:	32kDa
Gene Name:	sine oculis-related homeobox 1
Database Link:	NP_033215 Entrez Gene 20471 Mouse Q62231



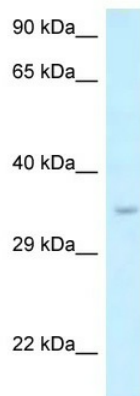
[View online »](#)

Background:

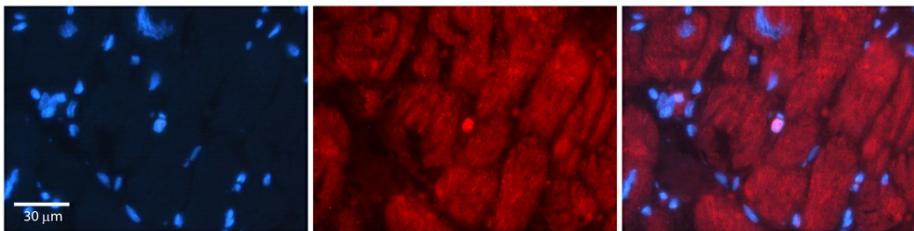
Six1 is a transcription factor that is involved in regulation of organogenesis. It seems to be required for development of kidney, muscle and inner ear and to be involved in later steps of myogenic differentiation. It may be involved in limb tendon and ligament development. It binds a 5'-TCA[AG][AG]TTNC-3' motif present in the MEF3 element in the myogenin promoter. It is thought to be regulated by association with Dach and Eya proteins. Six1 acts as activator of the IGFBP5 promoter, probably coactivated by EYA2. Repression of precursor cell proliferation in myoblasts is switched to activation through recruitment of EYA3 phosphatase to the SIX1-DACH1 complex. During myogenesis, Six1 seems to act together with EYA2 and DACH2 .

Synonyms:

BOS3; DFNA23; TIP39

Product images:


WB Suggested Anti-Six1 Antibody
 Titration: 1.0 ug/ml
 Positive Control: Mouse Kidney



Rabbit Anti-Six1 Antibody
 Catalog Number: TA356002
 Formalin Fixed Paraffin Embedded Tissue:
 Human Adult heart
 Observed Staining: Cytoplasmic,Nuclear (very rare in Nuclear)
 Primary Antibody Concentration: 1:600
 Secondary Antibody: Donkey anti-Rabbit-Cy2/3
 Secondary Antibody Concentration: 1:200
 Magnification: 20X
 Exposure Time: 0.5–2.0 sec
 Protocol located in Reviews and Data.