

Product datasheet for **TA355988**

CDK5 Rabbit Polyclonal Antibody

Product data:

Product Type:	Primary Antibodies
Applications:	IHC, WB
Reactivity:	Human, Mouse, Zebrafish
Host:	Rabbit
Clonality:	Polyclonal
Immunogen:	The immunogen is a synthetic peptide directed towards the C terminal region of human CDK5
Specificity:	Expected reactivity: Cow, Dog, Guinea Pig, Horse, Human, Mouse, Pig, Rabbit, Rat, Sheep, Yeast, Zebrafish Homology: Cow: 100%; Dog: 100%; Guinea Pig: 93%; Horse: 100%; Human: 100%; Mouse: 100%; Pig: 100%; Rabbit: 100%; Rat: 100%; Sheep: 100%; Yeast: 79%; Zebrafish: 100%
Formulation:	Liquid. Purified antibody supplied in 1x PBS buffer with 0.09% (w/v) sodium azide and 2% sucrose. <i>Note that this product is shipped as lyophilized powder to China customers.</i>
Concentration:	lot specific
Purification:	Protein A purified
Conjugation:	Unconjugated
Storage:	For short term use, store at 2-8°C up to 1 week. For long term storage, store at -20°C in small aliquots to prevent freeze-thaw cycles.
Stability:	Shelf life: one year from despatch.
Predicted Protein Size:	33kDa
Gene Name:	cyclin-dependent kinase 5
Database Link:	NP_004926 Entrez Gene 12568 Mouse Entrez Gene 1020 Human Q00535
Background:	CDK5 is probably involved in the control of the cell cycle. CDK5 can interact with d1 and d3-type G1 cyclins and phosphorylate histone H1, tau, MAP2 and NF-H and NF-M. CDK5 can also interact with p35 which activates the kinase



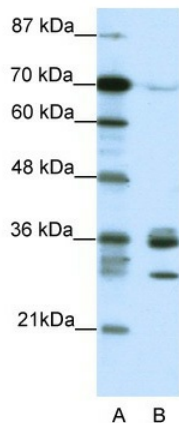
[View online »](#)

Synonyms: PSSALRE

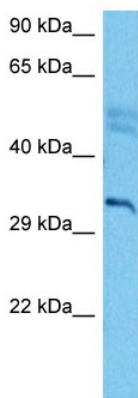
Protein Families: Druggable Genome, Protein Kinase

Protein Pathways: Alzheimer's disease, Axon guidance

Product images:

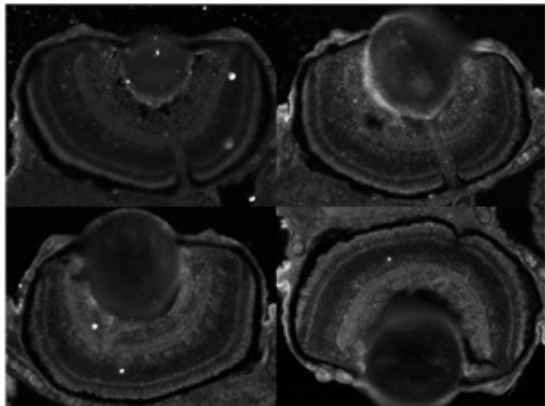


WB Suggested Anti-CDK5 Antibody Titration:
 1.25ug/ml
 ELISA Titer: 1:312500
 Positive Control: HepG2 cell lysate



Host: Rabbit
 Target Name: Cdk5
 Sample Type: Mouse Brain Lysate
 Antibody Dilution: 1.0µg/ml

Host: Mouse
 Target Name: CDK5
 Sample Tissue: Mouse Brain
 Antibody Dilution: 1 ug/ml



Sample Type: Zebrafish Embryo
Dilution: 1:100, 1:200