

Product datasheet for **TA355984**

KLF4 Rabbit Polyclonal Antibody

Product data:

Product Type:	Primary Antibodies
Applications:	IHC, WB
Reactivity:	Human, Mouse
Host:	Rabbit
Clonality:	Polyclonal
Immunogen:	The immunogen is a synthetic peptide directed towards the C terminal region of human KLF4
Specificity:	Expected reactivity: Cow, Dog, Guinea Pig, Horse, Human, Mouse, Rabbit, Rat, Zebrafish Homology: Cow: 100%; Dog: 100%; Guinea Pig: 100%; Horse: 100%; Human: 100%; Mouse: 100%; Rabbit: 100%; Rat: 100%; Zebrafish: 100%
Formulation:	Liquid. Purified antibody supplied in 1x PBS buffer with 0.09% (w/v) sodium azide and 2% sucrose. <i>Note that this product is shipped as lyophilized powder to China customers.</i>
Concentration:	lot specific
Purification:	Affinity Purified
Conjugation:	Unconjugated
Storage:	For short term use, store at 2-8°C up to 1 week. For long term storage, store at -20°C in small aliquots to prevent freeze-thaw cycles.
Stability:	Shelf life: one year from despatch.
Predicted Protein Size:	50kDa
Gene Name:	Kruppel-like factor 4 (gut)
Database Link:	NP_004226 Entrez Gene 16600 Mouse Entrez Gene 9314 Human O43474



[View online »](#)

Background:

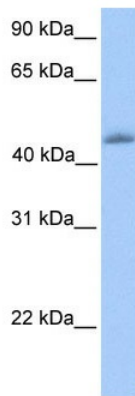
The mammalian Kruppel-like transcription factor, KLF4 is involved in preventing centrosome amplification following DNA damage caused by gamma-irradiation. It is both necessary and sufficient in preventing centrosome amplification following gamma-radiation-induced DNA damage and does so by transcriptionally suppressing cyclin E expression. Kruppel-like factor 4 is also known to exhibit checkpoint function during the G1/S and G2/M transitions of the cell cycle.

Synonyms:

EZF; GKLF

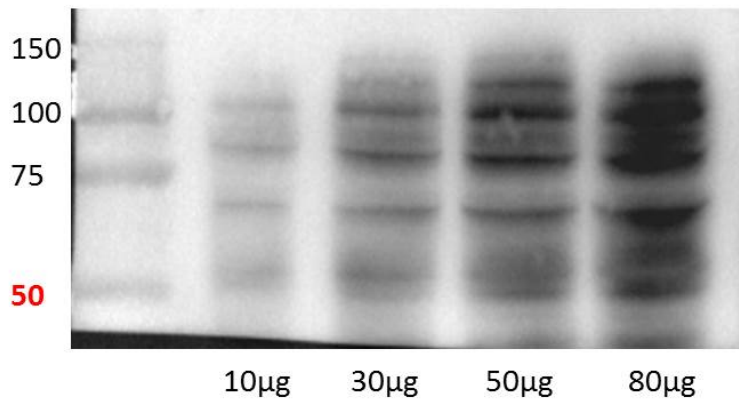
Protein Families:

Adult stem cells, Embryonic stem cells, ES Cell Differentiation/IPS, Induced pluripotent stem cells, Transcription Factors

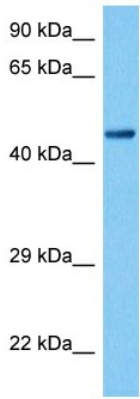
Product images:


WB Suggested Anti-KLF4 Antibody Titration: 0.2-1 ug/ml
Positive Control: Human heart

KLF4 (38430) – 1:1000

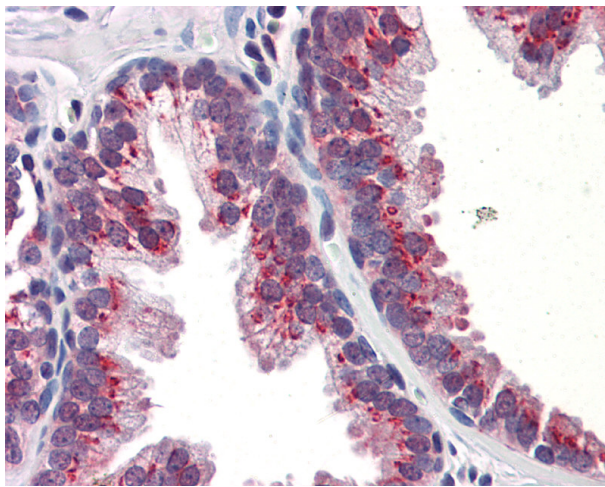


Human lung cell line



Host: Rabbit
Target Name: Klf12
Sample Type: Mouse Kidney Lysate
Antibody Dilution: 1.0µg/ml

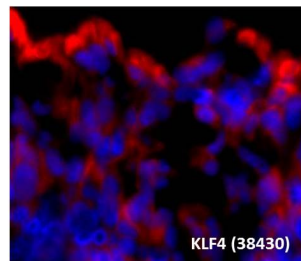
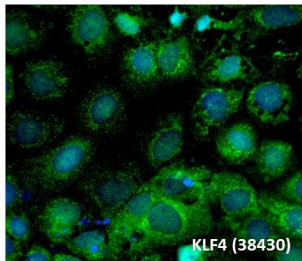
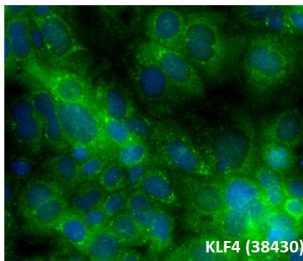
Host: Mouse
Target Name: KLF12
Sample Tissue: Mouse Kidney
Antibody Dilution: 1ug/ml



prostate

CFBE cell cultures

Human lung sections



Human lung epithelial cell