

## Product datasheet for **TA355978**

### SOX4 Rabbit Polyclonal Antibody

#### Product data:

Product Type:	Primary Antibodies
Applications:	IHC, WB
Reactivity:	Human, Mouse
Host:	Rabbit
Clonality:	Polyclonal
Immunogen:	The immunogen is a synthetic peptide directed towards the N terminal region of human SOX4
Specificity:	Peptide immunogen shares 93% with human SOX11.  <b>Expected reactivity:</b> Cow, Dog, Goat, Guinea Pig, Horse, Human, Mouse, Rabbit, Rat, Zebrafish <b>Homology:</b> Cow: 100%; Dog: 100%; Goat: 91%; Guinea Pig: 100%; Horse: 93%; Human: 100%; Mouse: 100%; Rabbit: 100%; Rat: 100%; Zebrafish: 100%
Formulation:	Liquid. Purified antibody supplied in 1x PBS buffer with 0.09% (w/v) sodium azide and 2% sucrose. <i>Note that this product is shipped as lyophilized powder to China customers.</i>
Concentration:	lot specific
Purification:	Affinity Purified
Conjugation:	Unconjugated
Storage:	For short term use, store at 2-8°C up to 1 week. For long term storage, store at -20°C in small aliquots to prevent freeze-thaw cycles.
Stability:	Shelf life: one year from despatch.
Predicted Protein Size:	47kDa
Gene Name:	SRY-box 4
Database Link:	<a href="#">NP_003098</a> <a href="#">Entrez Gene 20677 Mouse</a> <a href="#">Entrez Gene 6659 Human</a> <a href="#">Q06945</a>



[View online »](#)

**Background:**

SOX4 is a member of the SOX (SRY-related HMG-box) family of transcription factors involved in the regulation of embryonic development and in the determination of the cell fate. It may act as a transcriptional regulator after forming a protein complex with other proteins, such as syndecan binding protein (syntenin). The protein may function in the apoptosis pathway leading to cell death as well as to tumorigenesis and may mediate downstream effects of parathyroid hormone (PTH) and PTH-related protein (PTHrP) in bone development. The solution structure has been resolved for the HMG-box of a similar mouse protein. This intronless gene encodes a member of the SOX (SRY-related HMG-box) family of transcription factors involved in the regulation of embryonic development and in the determination of the cell fate. The encoded protein may act as a transcriptional regulator after forming a protein complex with other proteins, such as syndecan binding protein (syntenin). The protein may function in the apoptosis pathway leading to cell death as well as to tumorigenesis and may mediate downstream effects of parathyroid hormone (PTH) and PTH-related protein (PTHrP) in bone development. The solution structure has been resolved for the HMG-box of a similar mouse protein. Publication Note: This RefSeq record includes a subset of the publications that are available for this gene. Please see the Entrez Gene record to access additional publications.

**Synonyms:**

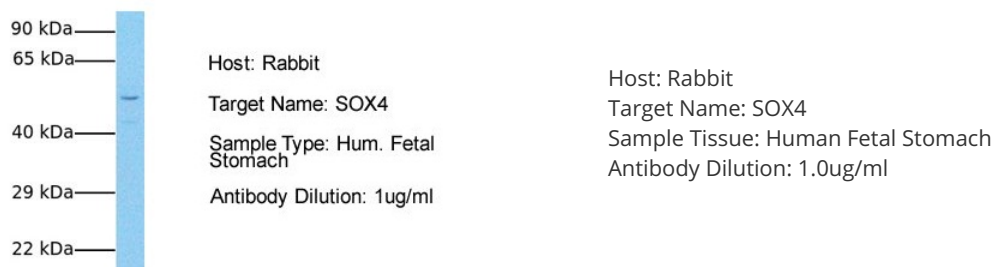
EVI16

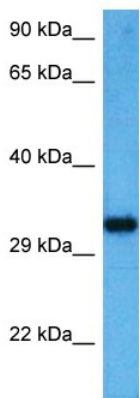
**Protein Families:**

Druggable Genome, ES Cell Differentiation/IPS, Induced pluripotent stem cells, Stem cell relevant signaling - TGFb/BMP signaling pathway, Transcription Factors

**Product images:**

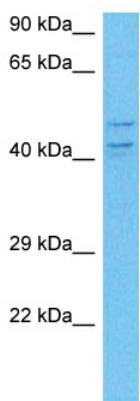
## SOX4





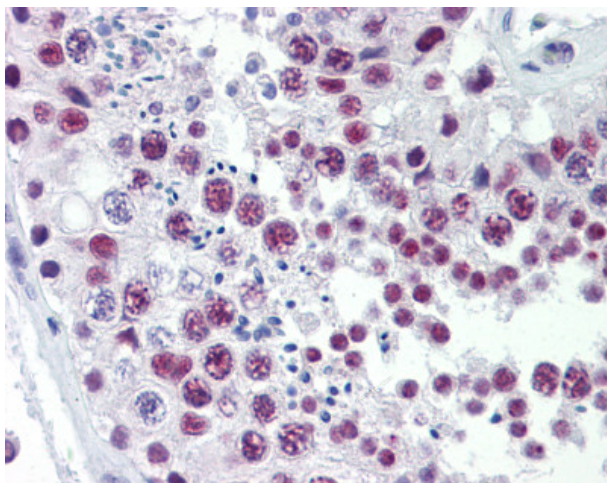
Host: Rabbit  
 Target Name: Sox12  
 Sample Type: Mouse Liver Lysate  
 Antibody Dilution: 1.0µg/ml

Host: Mouse  
 Target Name: SOX12  
 Sample Tissue: Mouse Liver  
 Antibody Dilution: 1µg/ml



Host: Rabbit  
 Target Name: SOX4  
 Sample Type: THP-1 Cell Lysate  
 Antibody Dilution: 1.0µg/ml

Host: Rabbit  
 Target Name: SOX4  
 Sample Tissue: Human THP-1 Whole Cell  
 Antibody Dilution: 1µg/ml



Human Testis