

Product datasheet for **TA355975**

Nme1 Rabbit Polyclonal Antibody

Product data:

| | |
|-------------------------|---|
| Product Type: | Primary Antibodies |
| Applications: | WB |
| Reactivity: | Human, Mouse |
| Host: | Rabbit |
| Clonality: | Polyclonal |
| Specificity: | Expected reactivity: Cow, Dog, Guinea Pig, Horse, Human, Mouse, Pig, Rabbit, Rat, Yeast Homology: Cow: 100%; Dog: 100%; Guinea Pig: 92%; Horse: 100%; Human: 100%; Mouse: 100%; Pig: 100%; Rabbit: 100%; Rat: 100%; Yeast: 92% |
| Formulation: | Liquid. Purified antibody supplied in 1x PBS buffer with 0.09% (w/v) sodium azide and 2% sucrose. <i>Note that this product is shipped as lyophilized powder to China customers.</i> |
| Concentration: | lot specific |
| Purification: | Affinity Purified |
| Conjugation: | Unconjugated |
| Storage: | For short term use, store at 2-8°C up to 1 week. For long term storage, store at -20°C in small aliquots to prevent freeze-thaw cycles. |
| Stability: | Shelf life: one year from despatch. |
| Predicted Protein Size: | 17kDa |
| Gene Name: | NME/NM23 nucleoside diphosphate kinase 1 |
| Database Link: | NP_032730 Entrez Gene 4830 Human Entrez Gene 18102 Mouse P15532 |



[View online »](#)

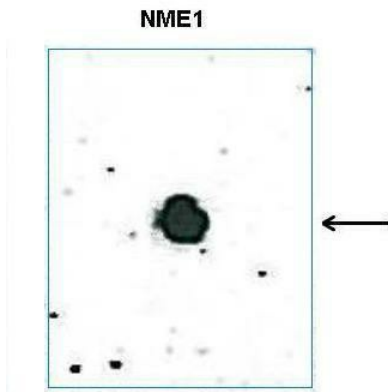
Background:

Nme1 has a major role in the synthesis of nucleoside triphosphates other than ATP. The ATP gamma phosphate is transferred to the NDP beta phosphate via a ping-pong mechanism, using a phosphorylated active-site intermediate. It possesses nucleoside-diphosphate kinase, serine/threonine-specific protein kinase, geranyl and farnesyl pyrophosphate kinase, histidine protein kinase and 3'-5' exonuclease activities. It is involved in cell proliferation, differentiation and development, signal transduction, G protein-coupled receptor endocytosis, and gene expression. It is required for neural development including neural patterning and cell fate determination.

Synonyms:

AWD; GAAD; NB; NBS; NDPK-A; NDPKA; NM23; NM23-H1; OTTHUMP00000174772

Product images:

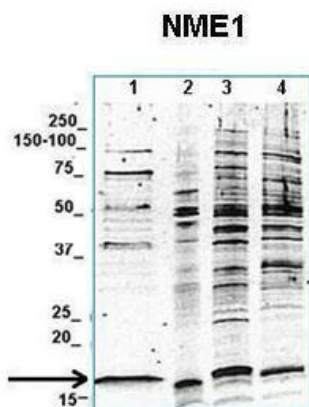


DB Suggested Anti-Nme1 antibody
Titration: 0.5 ug/ml
Positive Control: Recombinant human NME2 protein

See Other Application 1 Data and Customer Feedback for more information



WB Suggested Anti-Nme1 Antibody
Titration: 1.0 ug/ml
Positive Control: Mouse Liver



See Dot blot 2 Data and Customer Feedback for more information

Lanes:

1. 20 ug human MDA-MB-231 cell lysate
2. 20 ug murine 4T1 primary breast tumor cell lysate
3. 20 ug human MDA-MB-231 cell lysate
4. 20 ug murine 4T1 primary breast tumor cell lysate

Primary Antibody Dilution:

1:2000

Secondary Antibody:

Goat anti-rabbit-Alexa Fluor 680

Secondary Antibody Dilution:

1:25,000

Gene Name:

Nme1

Submitted by:

Anonymous