

Product datasheet for **TA355972**

Meis1 Rabbit Polyclonal Antibody

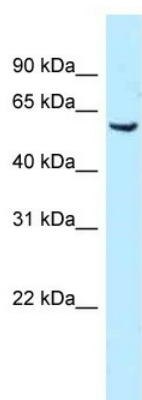
Product data:

Product Type:	Primary Antibodies
Applications:	WB
Reactivity:	Mouse
Host:	Rabbit
Clonality:	Polyclonal
Specificity:	Expected reactivity: Cow, Dog, Guinea Pig, Horse, Human, Mouse, Rabbit, Rat, Zebrafish Homology: Cow: 100%; Dog: 100%; Guinea Pig: 93%; Horse: 100%; Human: 100%; Mouse: 100%; Rabbit: 100%; Rat: 100%; Zebrafish: 92%
Formulation:	Liquid. Purified antibody supplied in 1x PBS buffer with 0.09% (w/v) sodium azide and 2% sucrose. <i>Note that this product is shipped as lyophilized powder to China customers.</i>
Concentration:	lot specific
Purification:	Affinity Purified
Conjugation:	Unconjugated
Storage:	For short term use, store at 2-8°C up to 1 week. For long term storage, store at -20°C in small aliquots to prevent freeze-thaw cycles.
Stability:	Shelf life: one year from despatch.
Predicted Protein Size:	51kDa
Gene Name:	Meis homeobox 1
Database Link:	NP_034919 Entrez Gene 17268 Mouse Q60954
Background:	Meis1 acts as a transcriptional regulator of PAX6 and a transcriptional activator of PF4 in complex with PBX1 or PBX2. It is required for hematopoiesis, megakaryocyte lineage development and vascular patterning. It may function as a cofactor for HOXA7 and HOXA9 in the induction of myeloid leukemias.
Synonyms:	MGC43380; WUGSC:H_NH0444B04.1



[View online »](#)

Product images:



WB Suggested Anti-Meis1 Antibody
Titration: 1.0 ug/ml
Positive Control: Mouse Kidney