

Product datasheet for **TA355968**

Ighmbp2 Rabbit Polyclonal Antibody

Product data:

Product Type:	Primary Antibodies
Applications:	WB
Reactivity:	Mouse
Host:	Rabbit
Clonality:	Polyclonal
Immunogen:	The immunogen is a synthetic peptide corresponding to a region of Mouse
Specificity:	Expected reactivity: Cow, Dog, Guinea Pig, Human, Mouse, Rat Homology: Cow: 100%; Dog: 100%; Guinea Pig: 100%; Human: 100%; Mouse: 100%; Rat: 100%
Formulation:	Liquid. Purified antibody supplied in 1x PBS buffer with 0.09% (w/v) sodium azide and 2% sucrose.
Concentration:	lot specific
Purification:	Affinity Purified
Conjugation:	Unconjugated
Storage:	For short term use, store at 2-8°C up to 1 week. For long term storage, store at -20°C in small aliquots to prevent freeze-thaw cycles.
Stability:	Shelf life: one year from despatch.
Predicted Protein Size:	109kDa
Gene Name:	immunoglobulin mu binding protein 2
Database Link:	NP_033238 Entrez Gene 20589 Mouse P40694



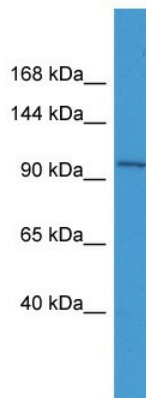
[View online »](#)

Background:

Ighmbp2 is a 5' to 3' helicase that unwinds RNA and DNA duplexes in an ATP-dependent reaction. Ighmbp2 acts as a transcription regulator. Ighmbp2 is required for the transcriptional activation of the flounder liver-type antifreeze protein gene. Ighmbp2 exhibits strong binding specificity to the enhancer element B of the flounder antifreeze protein gene intron. Ighmbp2 binds to the insulin II gene RIPE3B enhancer region. Ighmbp2 may be involved in translation. Ighmbp2 is a DNA-binding protein specific to 5'-phosphorylated single-stranded guanine-rich sequence related to the immunoglobulin mu chain switch region. Ighmbp2 preferentially binds to the 5'-GGGCT-3' motif. Ighmbp2 interacts with tRNA-Tyr.

Synonyms:

CATF1; FLJ34220; FLJ41171; GF-1; HCSA; HMN6; SMARD1; SMBP2; SMUBP2

Product images:

WB Suggested Anti-Ighmbp2 Antibody Titration:
0.2-1 ug/ml
ELISA Titer: 1:312500
Positive Control: Mouse Heart