

Product datasheet for TA355964

HMG1 (HMGB1) Rabbit Polyclonal Antibody

Product data:

Product Type:	Primary Antibodies
Applications:	WB
Reactivity:	Human, Rat
Host:	Rabbit
Clonality:	Polyclonal
Immunogen:	The immunogen is a synthetic peptide directed towards the N terminal region of human HMGB1
Specificity:	Expected reactivity: Cow, Dog, Guinea Pig, Horse, Human, Mouse, Rabbit, Rat Homology: Cow: 100%; Dog: 100%; Guinea Pig: 100%; Horse: 100%; Human: 100%; Mouse: 100%; Rabbit: 100%; Rat: 100%
Formulation:	Liquid. Purified antibody supplied in 1x PBS buffer with 0.09% (w/v) sodium azide and 2% sucrose. <i>Note that this product is shipped as lyophilized powder to China customers.</i>
Concentration:	lot specific
Purification:	Affinity Purified
Conjugation:	Unconjugated
Storage:	For short term use, store at 2-8°C up to 1 week. For long term storage, store at -20°C in small aliquots to prevent freeze-thaw cycles.
Stability:	Shelf life: one year from despatch.
Predicted Protein Size:	25kDa
Gene Name:	high mobility group box 1
Database Link:	NP_002119 Entrez Gene 25459 Rat Entrez Gene 3146 Human P09429
Background:	HMGB1 belongs to the HMGB family. It contains 2 HMG box DNA-binding domains. The protein binds preferentially single-stranded DNA and unwinds double stranded DNA. The oxidized HMGB1 may accumulate even in cells under oxidative stress.



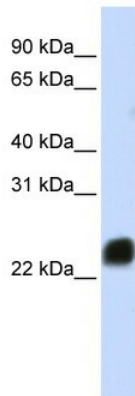
[View online »](#)

Synonyms: Amphoterin; DKFZp686A04236; HMG-1; HMG1; HMG3; OTTHUMP00000018196; OTTHUMP00000190860; OTTHUMP00000200117; SBP-1

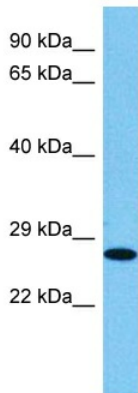
Protein Families: Druggable Genome, Stem cell - Pluripotency, Transcription Factors

Protein Pathways: Base excision repair

Product images:



WB Suggested Anti-HMGB1 Antibody Titration:
0.2-1 ug/ml
ELISA Titer: 1:312500
Positive Control: Hela cell lysate
HMGB1 is strongly supported by BioGPS gene expression data to be expressed in Human HeLa cells



Host: Rabbit
Target Name: Hmgb1
Sample Type: Rat Skeletal Muscle Lysate
Antibody Dilution: 1.0µg/ml

Host: Rat
Target Name: HMGB1
Sample Tissue: Rat Skeletal Muscle
Antibody Dilution: 1ug/ml