

Product datasheet for **TA355961**

PAX6 Rabbit Polyclonal Antibody

Product data:

Product Type:	Primary Antibodies
Applications:	WB
Reactivity:	Human
Host:	Rabbit
Clonality:	Polyclonal
Immunogen:	The immunogen is a synthetic peptide directed towards the C-terminal region of Human PAX6
Specificity:	Expected reactivity: Cow, Dog, Guinea Pig, Horse, Human, Mouse, Pig, Rabbit, Rat, Sheep, Zebrafish Homology: Cow: 93%; Dog: 93%; Guinea Pig: 93%; Horse: 93%; Human: 100%; Mouse: 100%; Pig: 100%; Rabbit: 100%; Rat: 100%; Sheep: 93%; Zebrafish: 79%
Formulation:	Liquid. Purified antibody supplied in 1x PBS buffer with 0.09% (w/v) sodium azide and 2% sucrose. <i>Note that this product is shipped as lyophilized powder to China customers.</i>
Concentration:	lot specific
Purification:	Affinity Purified
Conjugation:	Unconjugated
Storage:	For short term use, store at 2-8°C up to 1 week. For long term storage, store at -20°C in small aliquots to prevent freeze-thaw cycles.
Stability:	Shelf life: one year from despatch.
Predicted Protein Size:	46kDa
Gene Name:	paired box 6
Database Link:	XP_005253013 Entrez Gene 5080 Human P26367



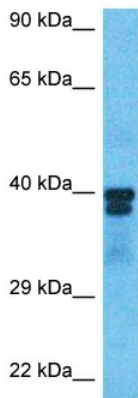
[View online »](#)

Background:

This gene encodes paired box gene 6, one of many human homologs of the *Drosophila melanogaster* gene *prd*. In addition to the hallmark feature of this gene family, a conserved paired box domain, the encoded protein also contains a homeo box domain. Both domains are known to bind DNA and function as regulators of gene transcription. This gene is expressed in the developing nervous system, and in developing eyes. Mutations in this gene are known to cause ocular disorders such as aniridia and Peter's anomaly. Alternatively spliced transcript variants encoding multiple isoforms have been observed for this gene.

Synonyms:

AN; AN2; D11S812E; MGC17209; MGDA; Oculorhombin; OTTHUMP00000038834; OTTHUMP00000038836; OTTHUMP00000038837; OTTHUMP00000038838; OTTHUMP00000038839; OTTHUMP00000038840; WAGR

Product images:

Host: Rabbit
Target Name: PAX6
Sample Tissue: 786-0 Cell Lysate
Antibody Dilution: 1.0µg/ml

Host: Rabbit
Target Name: PAX6
Sample Type: 786-0 Whole Cell lysates
Antibody Dilution: 1.0ug/ml