

Product datasheet for TA355952

Vgll1 Rabbit Polyclonal Antibody

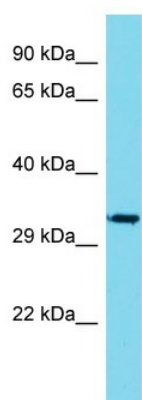
Product data:

Product Type:	Primary Antibodies
Applications:	WB
Reactivity:	Mouse
Host:	Rabbit
Clonality:	Polyclonal
Immunogen:	The immunogen is a synthetic peptide directed towards the C-terminal region of Mouse Vgll1
Specificity:	Expected reactivity: Mouse Homology: Mouse: 100%
Formulation:	Liquid. Purified antibody supplied in 1x PBS buffer with 0.09% (w/v) sodium azide and 2% sucrose. <i>Note that this product is shipped as lyophilized powder to China customers.</i>
Concentration:	lot specific
Purification:	Affinity Purified
Conjugation:	Unconjugated
Storage:	For short term use, store at 2-8°C up to 1 week. For long term storage, store at -20°C in small aliquots to prevent freeze-thaw cycles.
Stability:	Shelf life: one year from despatch.
Predicted Protein Size:	35kDa
Gene Name:	vestigial like family member 1
Database Link:	NP_573514 Entrez Gene 170828 Mouse Q99NC0
Background:	Vgll1 may act as a specific coactivator for the mammalian TEFs.
Synonyms:	TDU; TONU; Vgl-1; VGL1; WUGSC:H_GS188P18.1b



[View online »](#)

Product images:



Host: Rabbit
Target Name: Vgl11
Sample Type: Mouse Stomach lysates
Antibody Dilution: 1.0ug/ml