

## Product datasheet for **TA355949**

### Esrp2 Rabbit Polyclonal Antibody

#### Product data:

Product Type:	Primary Antibodies
Applications:	WB
Reactivity:	Mouse
Host:	Rabbit
Clonality:	Polyclonal
Immunogen:	The immunogen is a synthetic peptide directed towards the N-terminal region of Mouse Esrp2
Specificity:	<b>Expected reactivity:</b> Cow, Dog, Guinea Pig, Human, Mouse, Rabbit, Rat <b>Homology:</b> Cow: 100%; Dog: 100%; Guinea Pig: 100%; Human: 93%; Mouse: 100%; Rabbit: 100%; Rat: 100%
Formulation:	Liquid. Purified antibody supplied in 1x PBS buffer with 0.09% (w/v) sodium azide and 2% sucrose. <i>Note that this product is shipped as lyophilized powder to China customers.</i>
Concentration:	lot specific
Purification:	Affinity Purified
Conjugation:	Unconjugated
Storage:	For short term use, store at 2-8°C up to 1 week. For long term storage, store at -20°C in small aliquots to prevent freeze-thaw cycles.
Stability:	Shelf life: one year from despatch.
Predicted Protein Size:	77kDa
Gene Name:	epithelial splicing regulatory protein 2
Database Link:	<a href="#">NP_789808</a> <a href="#">Entrez Gene 77411 Mouse</a> <a href="#">Q8K0G8</a>



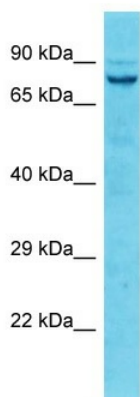
[View online »](#)

**Background:**

Esrp2 is an mRNA splicing factor that regulates the formation of epithelial cell-specific isoforms. It specifically regulates the expression of FGFR2-IIIb, an epithelial cell-specific isoform of FGFR2. It also regulates the splicing of CD44, CTNND1, ENAH, 3 transcripts that undergo changes in splicing during the epithelial-to-mesenchymal transition (EMT). It acts by directly binding specific sequences in mRNAs and binds the GU-rich sequence motifs in the ISE/ISS-3, a cis-element regulatory region present in the mRNA of FGFR2.

**Synonyms:**

FLJ21918; FLJ22248; RBM35B

**Product images:**

Host: Rabbit  
Target Name: Esrp2  
Sample Type: Mouse Heart lysates  
Antibody Dilution: 1.0ug/ml