

Product datasheet for **TA355944**

Hes7 Rabbit Polyclonal Antibody

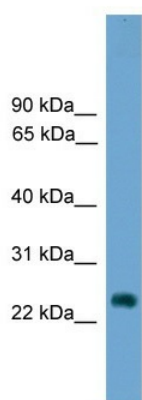
Product data:

Product Type:	Primary Antibodies
Applications:	WB
Reactivity:	Mouse
Host:	Rabbit
Clonality:	Polyclonal
Immunogen:	The immunogen is a synthetic peptide corresponding to a region of Mouse
Specificity:	Expected reactivity: Cow, Dog, Guinea Pig, Horse, Human, Mouse, Rabbit, Rat Homology: Cow: 92%; Dog: 92%; Guinea Pig: 92%; Horse: 92%; Human: 92%; Mouse: 100%; Rabbit: 100%; Rat: 100%
Formulation:	Liquid. Purified antibody supplied in 1x PBS buffer with 0.09% (w/v) sodium azide and 2% sucrose. <i>Note that this product is shipped as lyophilized powder to China customers.</i>
Concentration:	lot specific
Purification:	Affinity Purified
Conjugation:	Unconjugated
Storage:	For short term use, store at 2-8°C up to 1 week. For long term storage, store at -20°C in small aliquots to prevent freeze-thaw cycles.
Stability:	Shelf life: one year from despatch.
Predicted Protein Size:	25kDa
Gene Name:	hairy and enhancer of split 7 (Drosophila)
Database Link:	NP_149030 Entrez Gene 84653 Mouse Q8BKT2
Background:	Hes7 is a transcriptional repressor. Hes7 represses transcription from both N box- and E box-containing promoters. Hes7 may with HES1, cooperatively regulate somite formation in the presomitic mesoderm (PSM). Hes7 may function as a segmentation clock, which is essential for coordinated somite segmentation.
Synonyms:	bHLHb37; hHes7



[View online »](#)

Product images:



WB Suggested Anti-Hes7 Antibody Titration: 0.2-1 ug/ml
ELISA Titer: 1:312500
Positive Control: NIH/3T3 cell lysate