

Product datasheet for **TA355941**

Nr2c1 Rabbit Polyclonal Antibody

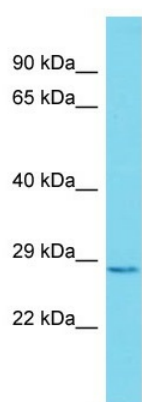
Product data:

Product Type:	Primary Antibodies
Applications:	WB
Reactivity:	Mouse
Host:	Rabbit
Clonality:	Polyclonal
Immunogen:	The immunogen is a synthetic peptide directed towards the middle region of MOUSE Nr2c1
Specificity:	Expected reactivity: Dog, Horse, Human, Mouse, Rabbit, Rat Homology: Dog: 87%; Horse: 87%; Human: 93%; Mouse: 93%; Rabbit: 80%; Rat: 100%
Formulation:	Liquid. Purified antibody supplied in 1x PBS buffer with 0.09% (w/v) sodium azide and 2% sucrose. <i>Note that this product is shipped as lyophilized powder to China customers.</i>
Concentration:	lot specific
Purification:	Affinity Purified
Conjugation:	Unconjugated
Storage:	For short term use, store at 2-8°C up to 1 week. For long term storage, store at -20°C in small aliquots to prevent freeze-thaw cycles.
Stability:	Shelf life: one year from despatch.
Predicted Protein Size:	28kDa
Gene Name:	nuclear receptor subfamily 2, group C, member 1
Database Link:	Entrez Gene 22025 Mouse Q505F1-2
Background:	Nr2c1 is an orphan nuclear receptor. Nr2c1 represses transcription and binds DNA as a homodimer. Nr2c1 binds the IR7 element in the promoter of its own gene in an autoregulatory negative feedback mechanism.
Synonyms:	TR2; TR2-11



[View online »](#)

Product images:



Host: Rabbit
Target Name: Nr2c1
Sample Type: Mouse Stomach lysates
Antibody Dilution: 1.0ug/ml