

Product datasheet for **TA355936**

Mybbp1a Rabbit Polyclonal Antibody

Product data:

Product Type:	Primary Antibodies
Applications:	WB
Reactivity:	Human, Mouse
Host:	Rabbit
Clonality:	Polyclonal
Immunogen:	The immunogen is a synthetic peptide directed towards the C terminal region of mouse Mybbp1a
Specificity:	Expected reactivity: Human, Mouse, Rat Homology: Human: 79%; Mouse: 100%; Rat: 86%
Formulation:	Liquid. Purified antibody supplied in 1x PBS buffer with 0.09% (w/v) sodium azide and 2% sucrose. <i>Note that this product is shipped as lyophilized powder to China customers.</i>
Concentration:	lot specific
Purification:	Affinity Purified
Conjugation:	Unconjugated
Storage:	For short term use, store at 2-8°C up to 1 week. For long term storage, store at -20°C in small aliquots to prevent freeze-thaw cycles.
Stability:	Shelf life: one year from despatch.
Predicted Protein Size:	152kDa
Gene Name:	MYB binding protein (P160) 1a
Database Link:	NP_058056 Entrez Gene 10514 Human Entrez Gene 18432 Mouse Q7TPV4
Background:	Mybbp1a may activate or repress transcription via interactions with sequence specific DNA-binding proteins. Repression may be mediated at least in part by histone deacetylase activity.
Synonyms:	FLJ37886; P160; PAP2

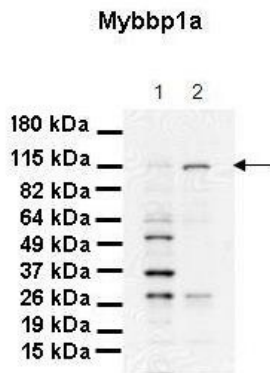


[View online »](#)

Product images:



WB Suggested Anti-Mybbp1a Antibody Titration:
 0.2-1 ug/ml
 ELISA Titer: 1:312500
 Positive Control: SP2/O cell lysate



Lanes:
 1. 30 ug MiaPaca-2 cell lysate
 2. 30 ug Panc-1 cell lysate
 Primary Antibody Dilution:
 1:1000
 Secondary Antibody:
 Goat anti-Rabbit HRP
 Secondary Antibody Dilution:
 1:4000
 Gene Name:
 Mybbp1a
 Submitted by:
 Dr. Crissy Dudgeon, Ph.D., CINJ

See Immunoblot 2 Data and Customer Feedback for more information