

Product datasheet for **TA355935**

Tgfb1 Rabbit Polyclonal Antibody

Product data:

Product Type:	Primary Antibodies
Applications:	IF, IHC, WB
Reactivity:	Human, Mouse
Host:	Rabbit
Clonality:	Polyclonal
Immunogen:	The immunogen is a synthetic peptide directed towards the middle region of mouse TGFB1
Specificity:	Expected reactivity: Cow, Dog, Goat, Guinea Pig, Horse, Mouse, Pig, Rat, Sheep Homology: Cow: 79%; Dog: 79%; Goat: 79%; Guinea Pig: 87%; Horse: 79%; Mouse: 100%; Pig: 93%; Rat: 93%; Sheep: 79%
Formulation:	Liquid. Purified antibody supplied in 1x PBS buffer with 0.09% (w/v) sodium azide and 2% sucrose. <i>Note that this product is shipped as lyophilized powder to China customers.</i>
Concentration:	lot specific
Purification:	Affinity Purified
Conjugation:	Unconjugated
Storage:	For short term use, store at 2-8°C up to 1 week. For long term storage, store at -20°C in small aliquots to prevent freeze-thaw cycles.
Stability:	Shelf life: one year from despatch.
Predicted Protein Size:	43kDa
Gene Name:	transforming growth factor, beta 1
Database Link:	NP_035707 Entrez Gene 7040 Human Entrez Gene 21803 Mouse P04202



[View online »](#)

Background:

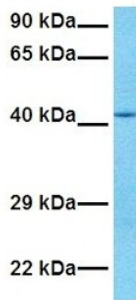
Tgfb1 is a multifunctional protein that control proliferation, differentiation, and other functions in many cell types. Many cells synthesize TGFB1 and essentially all of them have specific receptors for this protein. It regulates the actions of many other growth factors and determines a positive or negative direction of their effects. It plays an important role in bone remodelling. It is a potent stimulator of osteoblastic bone formation, causing chemotaxis, proliferation and differentiation in committed osteoblasts.

Synonyms:

CED; DPD1; LAP; TGF-beta-1; TGFB; TGfbeta

Product images:

TGFB1



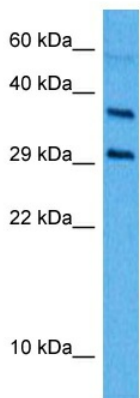
Host: Rabbit
 Target Name: TGFB1
 Sample Type: Human Fetal Heart
 Antibody Dilution: 1ug/ml

Host: Rabbit
 Target Name: TGFB1
 Sample Tissue: Human Fetal Heart
 Antibody Dilution: 1.0ug/ml



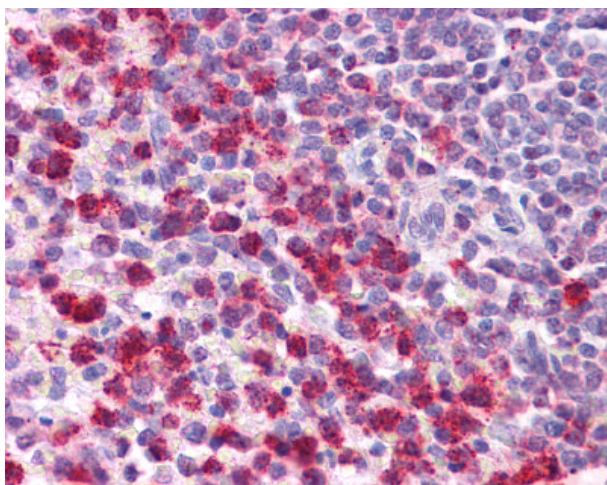
Host: Rabbit
 Target Name: Tgfb1
 Sample Type: Mouse Pancreas Lysate
 Antibody Dilution: 1.0µg/ml

Host: Mouse
 Target Name: TGFB1
 Sample Tissue: Mouse Pancreas
 Antibody Dilution: 1ug/ml

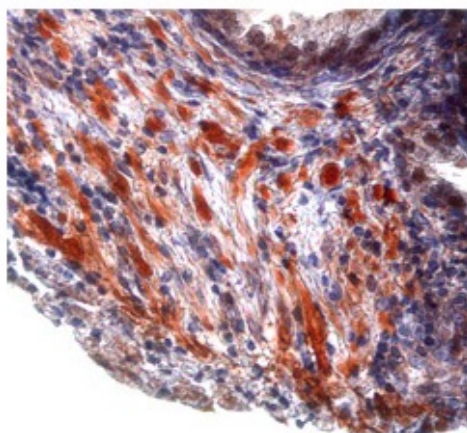


Host: Rabbit
 Target Name: Tgfb1
 Sample Type: Mouse Spleen Lysate
 Antibody Dilution: 1.0µg/ml

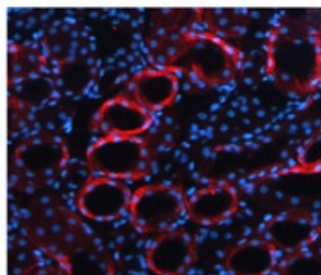
Host: Mouse
 Target Name: TGFB1
 Sample Tissue: Mouse Spleen
 Antibody Dilution: 1ug/ml



Human Spleen



TGFB1 in human prostate cancer tissue was detected using HRP/AEC red color stain. Working dilutions: 5-10 ug/ml.

**Tgf beta 1 ((ARP37894_P050)**

Immunofluorescent Tgf beta 1 detection in mouse kidney (red fluorescence). Nuclei were stained with DAPI (blue fluorescence).

Suitable for IHC on human cells.
Working dilution 5-10 ug/mL

Immunofluorescent TGFB1 detection in mouse kidney (red fluorescence). Nuclei were stained with DAPI (blue fluorescence).
Working dilutions: 5-10 ug/ml