

Product datasheet for **TA355927**

Vax1 Rabbit Polyclonal Antibody

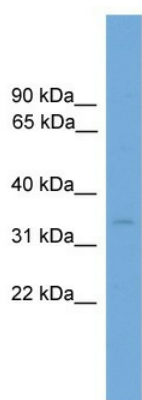
Product data:

Product Type:	Primary Antibodies
Applications:	WB
Reactivity:	Mouse
Host:	Rabbit
Clonality:	Polyclonal
Immunogen:	The immunogen is a synthetic peptide corresponding to a region of Mouse
Specificity:	Expected reactivity: Cow, Dog, Human, Mouse, Pig, Rat Homology: Cow: 92%; Dog: 85%; Human: 92%; Mouse: 100%; Pig: 92%; Rat: 100%
Formulation:	Liquid. Purified antibody supplied in 1x PBS buffer with 0.09% (w/v) sodium azide and 2% sucrose. <i>Note that this product is shipped as lyophilized powder to China customers.</i>
Concentration:	lot specific
Purification:	Affinity Purified
Conjugation:	Unconjugated
Storage:	For short term use, store at 2-8°C up to 1 week. For long term storage, store at -20°C in small aliquots to prevent freeze-thaw cycles.
Stability:	Shelf life: one year from despatch.
Predicted Protein Size:	35kDa
Gene Name:	ventral anterior homeobox 1
Database Link:	NP_033527 Entrez Gene 22326 Mouse Q2NKI2
Background:	Vax1 is required for axon guidance and major tract formation in the developing forebrain. It may contribute to the differentiation of the neuroretina, pigmented epithelium and optic stalk.
Synonyms:	MGC126743; MGC126745



[View online »](#)

Product images:



WB Suggested Anti-Vax1 Antibody Titration: 0.2-1 ug/ml
ELISA Titer: 1:1562500
Positive Control: Mouse Lung