

## Product datasheet for TA355925

### Mitf Rabbit Polyclonal Antibody

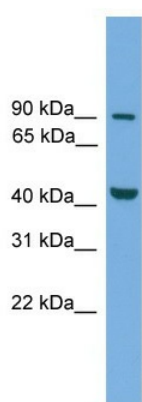
#### Product data:

Product Type:	Primary Antibodies
Applications:	WB
Reactivity:	Mouse
Host:	Rabbit
Clonality:	Polyclonal
Immunogen:	The immunogen is a synthetic peptide corresponding to a region of Mouse
Specificity:	<b>Expected reactivity:</b> Cow, Dog, Guinea Pig, Horse, Human, Mouse, Rabbit, Rat, Sheep <b>Homology:</b> Cow: 93%; Dog: 93%; Guinea Pig: 100%; Horse: 100%; Human: 100%; Mouse: 100%; Rabbit: 93%; Rat: 100%; Sheep: 93%
Formulation:	Liquid. Purified antibody supplied in 1x PBS buffer with 0.09% (w/v) sodium azide and 2% sucrose. <i>Note that this product is shipped as lyophilized powder to China customers.</i>
Concentration:	lot specific
Purification:	Affinity Purified
Conjugation:	Unconjugated
Storage:	For short term use, store at 2-8°C up to 1 week. For long term storage, store at -20°C in small aliquots to prevent freeze-thaw cycles.
Stability:	Shelf life: one year from despatch.
Predicted Protein Size:	47kDa
Gene Name:	microphthalmia-associated transcription factor
Database Link:	<a href="#">NP_032627</a> <a href="#">Entrez Gene 17342 Mouse</a> <a href="#">Q32MU7</a>
Background:	The function of this protein remains unknown.
Synonyms:	bHLHe32; MI; WS2A



[View online »](#)

Product images:



WB Suggested Anti-Mitf Antibody Titration: 0.2-1 ug/ml  
ELISA Titer: 1:1562500  
Positive Control: Mouse Liver