

Product datasheet for **TA355924**

Npas2 Rabbit Polyclonal Antibody

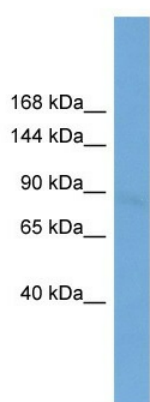
Product data:

Product Type:	Primary Antibodies
Applications:	WB
Reactivity:	Mouse
Host:	Rabbit
Clonality:	Polyclonal
Immunogen:	The immunogen is a synthetic peptide directed towards the N terminal region of human Npas2
Specificity:	Expected reactivity: Cow, Human, Mouse, Rabbit, Rat Homology: Cow: 86%; Human: 79%; Mouse: 100%; Rabbit: 79%; Rat: 100%
Formulation:	Liquid. Purified antibody supplied in 1x PBS buffer with 0.09% (w/v) sodium azide and 2% sucrose. <i>Note that this product is shipped as lyophilized powder to China customers.</i>
Concentration:	lot specific
Purification:	Affinity Purified
Conjugation:	Unconjugated
Storage:	For short term use, store at 2-8°C up to 1 week. For long term storage, store at -20°C in small aliquots to prevent freeze-thaw cycles.
Stability:	Shelf life: one year from despatch.
Predicted Protein Size:	91kDa
Gene Name:	neuronal PAS domain protein 2
Database Link:	NP_032745 Entrez Gene 18143 Mouse P97460
Background:	BMAL1-NPAS2 heterodimers activate E-box element (3'-CACGTG-5') transcription of a number of proteins of the circadian clock. This transcription is inhibited in a feedback loop by PER, and also by CRY proteins.
Synonyms:	bHLHe9; FLJ23138; MGC71151; MOP4; PASD4



[View online »](#)

Product images:



WB Suggested Anti-Npas2 Antibody Titration: 0.2-1 ug/ml
Positive Control: NIH/3T3 cell lysate