

## Product datasheet for TA355922

### Prx2 Rabbit Polyclonal Antibody

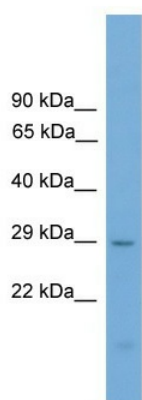
#### Product data:

Product Type:	Primary Antibodies
Applications:	WB
Reactivity:	Mouse
Host:	Rabbit
Clonality:	Polyclonal
Immunogen:	The immunogen is a synthetic peptide corresponding to a region of Mouse
Specificity:	<b>Expected reactivity:</b> Cow, Dog, Guinea Pig, Horse, Human, Mouse, Pig, Rabbit, Rat <b>Homology:</b> Cow: 93%; Dog: 93%; Guinea Pig: 79%; Horse: 86%; Human: 93%; Mouse: 100%; Pig: 93%; Rabbit: 86%; Rat: 100%
Formulation:	Liquid. Purified antibody supplied in 1x PBS buffer with 0.09% (w/v) sodium azide and 2% sucrose. <i>Note that this product is shipped as lyophilized powder to China customers.</i>
Concentration:	lot specific
Purification:	Affinity Purified
Conjugation:	Unconjugated
Storage:	For short term use, store at 2-8°C up to 1 week. For long term storage, store at -20°C in small aliquots to prevent freeze-thaw cycles.
Stability:	Shelf life: one year from despatch.
Predicted Protein Size:	26kDa
Gene Name:	paired related homeobox 2
Database Link:	<a href="#">NP_033142</a> <a href="#">Entrez Gene 20204 Mouse</a> <a href="#">Q06348</a>
Background:	The function of this protein remains unknown.
Synonyms:	MGC19843; PMX2; PRX-2; PRX2



[View online »](#)

## Product images:



WB Suggested Anti-Prrx2 Antibody Titration: 0.2-1 ug/ml  
Positive Control: Mouse Heart