

Product datasheet for **TA355919**

Relb Rabbit Polyclonal Antibody

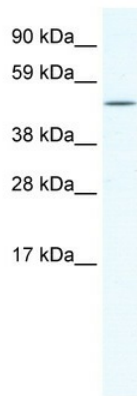
Product data:

Product Type:	Primary Antibodies
Applications:	WB
Reactivity:	Mouse
Host:	Rabbit
Clonality:	Polyclonal
Immunogen:	The immunogen is a synthetic peptide directed towards the N terminal region of mouse RELB
Specificity:	Expected reactivity: Cow, Dog, Human, Mouse, Rat Homology: Cow: 86%; Dog: 93%; Human: 93%; Mouse: 100%; Rat: 86%
Formulation:	Liquid. Purified antibody supplied in 1x PBS buffer with 0.09% (w/v) sodium azide and 2% sucrose. <i>Note that this product is shipped as lyophilized powder to China customers.</i>
Concentration:	lot specific
Purification:	Protein A purified
Conjugation:	Unconjugated
Storage:	For short term use, store at 2-8°C up to 1 week. For long term storage, store at -20°C in small aliquots to prevent freeze-thaw cycles.
Stability:	Shelf life: one year from despatch.
Predicted Protein Size:	61kDa
Gene Name:	avian reticuloendotheliosis viral (v-rel) oncogene related B
Database Link:	NP_033072 Entrez Gene 19698 Mouse Q04863
Background:	RelB is a member of the Rel/nuclear factor (NF)-kappa B family of transcription factors, defects in RelB affects antigen presenting cells and the formation of lymphoid organs. Targeted disruption of the Rel/NF-kappaB family members NF-kappaB2, encoding p100/p52, and RelB in mice results in anatomical defects of secondary lymphoid tissues.
Synonyms:	I-REL; IREL; REL-B



[View online »](#)

Product images:



WB Suggested Anti-RELB Antibody Titration:
 2.5ug/ml
 ELISA Titer: 1:1562500
 Positive Control: NIH/3T3 cell lysate



Host: Rabbit
 Target Name: Relb
 Sample Type: Mouse Spleen Lysate
 Antibody Dilution: 1.0µg/ml

Host: Rabbit
 Target Name: RELB
 Sample Tissue: Mouse Spleen
 Antibody Dilution: 1 ug/ml



Host: Rabbit
 Target Name: Relb
 Sample Type: Mouse Spleen Lysate
 Antibody Dilution: 1.0µg/ml

Host: Mouse
 Target Name: RELB
 Sample Tissue: Mouse Spleen
 Antibody Dilution: 1 ug/ml