

Product datasheet for **TA355918**

Foxj1 Rabbit Polyclonal Antibody

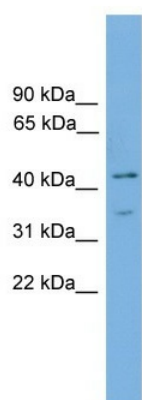
Product data:

Product Type:	Primary Antibodies
Applications:	WB
Reactivity:	Mouse
Host:	Rabbit
Clonality:	Polyclonal
Immunogen:	The immunogen is a synthetic peptide corresponding to a region of Mouse
Specificity:	Expected reactivity: Cow, Dog, Guinea Pig, Horse, Human, Mouse, Rabbit, Rat Homology: Cow: 93%; Dog: 93%; Guinea Pig: 93%; Horse: 93%; Human: 93%; Mouse: 100%; Rabbit: 100%; Rat: 93%
Formulation:	Liquid. Purified antibody supplied in 1x PBS buffer with 0.09% (w/v) sodium azide and 2% sucrose. <i>Note that this product is shipped as lyophilized powder to China customers.</i>
Concentration:	lot specific
Purification:	Affinity Purified
Conjugation:	Unconjugated
Storage:	For short term use, store at 2-8°C up to 1 week. For long term storage, store at -20°C in small aliquots to prevent freeze-thaw cycles.
Stability:	Shelf life: one year from despatch.
Predicted Protein Size:	45kDa
Gene Name:	forkhead box J1
Database Link:	NP_032266 Entrez Gene 15223 Mouse Q3US42
Background:	The function of this protein remains unknown.
Synonyms:	FKHL13; HFH-4; HFH4; MGC35202



[View online »](#)

Product images:



WB Suggested Anti-Foxj1 Antibody Titration: 0.2-1 ug/ml
Positive Control: Mouse Small Intestine