

Product datasheet for **TA355915**

Rhox8 Rabbit Polyclonal Antibody

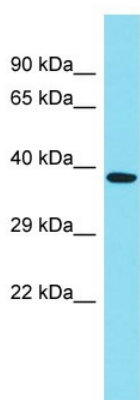
Product data:

Product Type:	Primary Antibodies
Applications:	IHC, WB
Reactivity:	Mouse
Host:	Rabbit
Clonality:	Polyclonal
Immunogen:	The immunogen is a synthetic peptide directed towards the C-terminal region of Mouse Rhox8
Specificity:	Expected reactivity: Mouse Homology: Mouse: 100%
Formulation:	Liquid. Purified antibody supplied in 1x PBS buffer with 0.09% (w/v) sodium azide and 2% sucrose. <i>Note that this product is shipped as lyophilized powder to China customers.</i>
Concentration:	lot specific
Purification:	Affinity Purified
Conjugation:	Unconjugated
Storage:	For short term use, store at 2-8°C up to 1 week. For long term storage, store at -20°C in small aliquots to prevent freeze-thaw cycles.
Stability:	Shelf life: one year from despatch.
Predicted Protein Size:	36kDa
Gene Name:	reproductive homeobox 8
Database Link:	NP_001004193 Entrez Gene 434768 Mouse Q6VSS7
Background:	The function of this protein remains unknown.
Synonyms:	Tox



[View online »](#)

Product images:



Host: Rabbit
Target Name: Rhox8
Sample Type: Mouse Testis lysates
Antibody Dilution: 1.0ug/ml