

Product datasheet for **TA355909**

ABHD2 Rabbit Polyclonal Antibody

Product data:

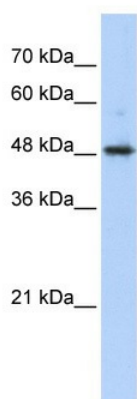
Product Type:	Primary Antibodies
Applications:	WB
Reactivity:	Human
Host:	Rabbit
Clonality:	Polyclonal
Immunogen:	The immunogen is a synthetic peptide directed towards the middle region of human ABHD2
Specificity:	Expected reactivity: Cow, Dog, Guinea Pig, Horse, Human, Mouse, Pig, Rabbit, Rat, Zebrafish Homology: Cow: 100%; Dog: 100%; Guinea Pig: 93%; Horse: 100%; Human: 100%; Mouse: 100%; Pig: 100%; Rabbit: 93%; Rat: 100%; Zebrafish: 93%
Formulation:	Liquid. Purified antibody supplied in 1x PBS buffer with 0.09% (w/v) sodium azide and 2% sucrose. <i>Note that this product is shipped as lyophilized powder to China customers.</i>
Concentration:	lot specific
Purification:	Affinity Purified
Conjugation:	Unconjugated
Storage:	For short term use, store at 2-8°C up to 1 week. For long term storage, store at -20°C in small aliquots to prevent freeze-thaw cycles.
Stability:	Shelf life: one year from despatch.
Predicted Protein Size:	48kDa
Gene Name:	abhydrolase domain containing 2
Database Link:	NP_008942 Entrez Gene 11057 Human P08910
Background:	ABHD2 contains an alpha/beta hydrolase fold, which is a catalytic domain found in a very wide range of enzymes. ABHD2 may play a role in smooth muscle cells migration. This gene encodes a protein containing an alpha/beta hydrolase fold, which is a catalytic domain found in a very wide range of enzymes. The function of this protein has not been determined. Alternative splicing of this gene results in two transcript variants encoding the same protein.



[View online »](#)

Synonyms: HS1-2; LABH2; MGC26249; MGC111112; PHPS1-2

Product images:



WB Suggested Anti-ABHD2 Antibody Titration:
0.2-1 ug/ml
ELISA Titer: 1:312500
Positive Control: Transfected 293T