

Product datasheet for **TA355906**

ZNF690 (ZSCAN29) Rabbit Polyclonal Antibody

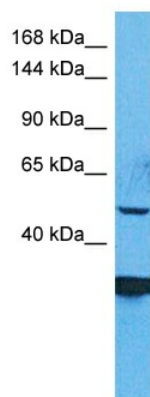
Product data:

Product Type:	Primary Antibodies
Applications:	WB
Reactivity:	Human
Host:	Rabbit
Clonality:	Polyclonal
Immunogen:	The immunogen for Anti-ZSCAN29 antibody is: synthetic peptide directed towards the middle region of Human ZSC29
Specificity:	Expected reactivity: Cow, Dog, Guinea Pig, Horse, Human, Mouse, Rabbit Homology: Cow: 100%; Dog: 93%; Guinea Pig: 93%; Horse: 86%; Human: 100%; Mouse: 93%; Rabbit: 86%
Formulation:	Liquid. Purified antibody supplied in 1x PBS buffer with 0.09% (w/v) sodium azide and 2% sucrose.
Concentration:	lot specific
Purification:	Affinity purified
Conjugation:	Unconjugated
Storage:	For short term use, store at 2-8°C up to 1 week. For long term storage, store at -20°C in small aliquots to prevent freeze-thaw cycles.
Stability:	Shelf life: one year from despatch.
Predicted Protein Size:	50 kDa
Gene Name:	zinc finger and SCAN domain containing 29
Database Link:	Entrez Gene 146050 Human Q8IYW8-4
Synonyms:	FLJ35867; MGC129894; MGC129895; Zfp690; ZNF690



[View online »](#)

Product images:



Host: Rabbit
 Target Name: ZSC29
 Sample Tissue: RPMI-8226 Cell Lysate
 Antibody Dilution: 1.0µg/ml

WB Suggested Anti-ZSC29 antibody Titration: 1
 ug/mL
 Sample Type: Human RPMI-8226 Whole Cell