

## Product datasheet for **TA355901**

### ZNF140 Rabbit Polyclonal Antibody

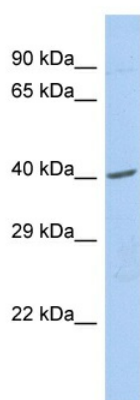
#### Product data:

Product Type:	Primary Antibodies
Applications:	WB
Reactivity:	Human
Host:	Rabbit
Clonality:	Polyclonal
Immunogen:	The immunogen is a synthetic peptide directed towards the C-terminal region of human ZNF140
Specificity:	<b>Expected reactivity:</b> Cow, Dog, Horse, Human, Mouse, Pig, Rabbit, Rat <b>Homology:</b> Cow: 100%; Dog: 100%; Horse: 100%; Human: 100%; Mouse: 77%; Pig: 91%; Rabbit: 91%; Rat: 91%
Formulation:	Liquid. Purified antibody supplied in 1x PBS buffer with 0.09% (w/v) sodium azide and 2% sucrose. <i>Note that this product is shipped as lyophilized powder to China customers.</i>
Concentration:	lot specific
Purification:	Affinity Purified
Conjugation:	Unconjugated
Storage:	For short term use, store at 2-8°C up to 1 week. For long term storage, store at -20°C in small aliquots to prevent freeze-thaw cycles.
Stability:	Shelf life: one year from despatch.
Predicted Protein Size:	38kDa
Gene Name:	zinc finger protein 140
Database Link:	<a href="#">NP_001287705.1</a> <a href="#">Entrez Gene 7699 Human</a> <a href="#">Q05CP6</a>
Synonyms:	pHZ-39
Protein Families:	Transcription Factors



[View online »](#)

Product images:



Host: Rabbit  
Target Name: ZNF140  
Sample Tissue: 721\_B Cell Lysate  
Antibody Dilution: 1.0 $\mu$ g/ml

Host: Rabbit  
Target Name: ZNF140  
Sample Type: 721\_B Whole cell lysates  
Antibody Dilution: 1.0 $\mu$ g/ml