

## Product datasheet for **TA355899**

### **Pdlim1 Rabbit Polyclonal Antibody**

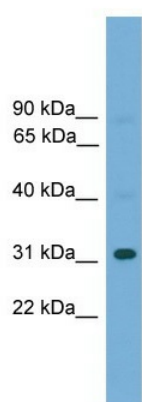
#### **Product data:**

Product Type:	Primary Antibodies
Applications:	WB
Reactivity:	Mouse
Host:	Rabbit
Clonality:	Polyclonal
Immunogen:	The immunogen is a synthetic peptide directed towards the middle region of mouse PDLIM1_x000D_
Specificity:	<b>Expected reactivity:</b> Mouse <b>Homology:</b> Mouse: 86%
Formulation:	Liquid. Purified antibody supplied in 1x PBS buffer with 0.09% (w/v) sodium azide and 2% sucrose. <i>Note that this product is shipped as lyophilized powder to China customers.</i>
Concentration:	lot specific
Purification:	Affinity Purified
Conjugation:	Unconjugated
Storage:	For short term use, store at 2-8°C up to 1 week. For long term storage, store at -20°C in small aliquots to prevent freeze-thaw cycles.
Stability:	Shelf life: one year from despatch.
Predicted Protein Size:	35kDa
Gene Name:	PDZ and LIM domain 1 (elfin)
Database Link:	<a href="#">NP_058557.2</a> <a href="#">Entrez Gene 54132 Mouse</a> <a href="#">O70400</a>
Background:	The function of this protein remains unknown.
Synonyms:	CLIM1; CLP-36; CLP36; elfin; enigma; hCLIM1



[View online »](#)

## Product images:



WB Suggested Anti-Pdlim1 Antibody Titration:  
0.2-1 ug/ml  
Positive Control: Mouse Liver