

Product datasheet for **TA355896**

5930431H10 Rabbit Polyclonal Antibody

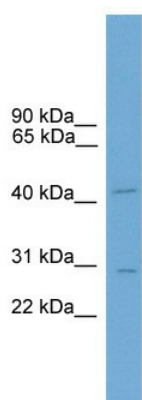
Product data:

Product Type:	Primary Antibodies
Applications:	WB
Reactivity:	Mouse
Host:	Rabbit
Clonality:	Polyclonal
Immunogen:	The immunogen is a synthetic peptide directed towards the c terminal region of human 5930431H10
Specificity:	Expected reactivity: Guinea Pig, Horse, Mouse, Rat Homology: Guinea Pig: 79%; Horse: 79%; Mouse: 100%; Rat: 86%
Formulation:	Liquid. Purified antibody supplied in 1x PBS buffer with 0.09% (w/v) sodium azide and 2% sucrose. <i>Note that this product is shipped as lyophilized powder to China customers.</i>
Concentration:	lot specific
Purification:	Affinity Purified
Conjugation:	Unconjugated
Storage:	For short term use, store at 2-8°C up to 1 week. For long term storage, store at -20°C in small aliquots to prevent freeze-thaw cycles.
Stability:	Shelf life: one year from despatch.
Predicted Protein Size:	46kDa
Gene Name:	hypothetical protein 5930431H10
Database Link:	XP_486185 Entrez Gene 270118 Mouse
Background:	The function of this protein remains unknown.



[View online »](#)

Product images:



WB Suggested Anti-5930431H10 Antibody
Titration: 0.2-1 ug/ml
Positive Control: Mouse Kidney