

## Product datasheet for **TA355895**

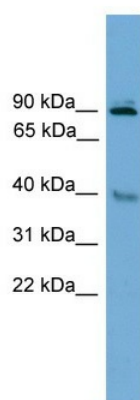
### L3mbtl1 Rabbit Polyclonal Antibody

#### Product data:

Product Type:	Primary Antibodies
Applications:	WB
Reactivity:	Mouse
Host:	Rabbit
Clonality:	Polyclonal
Immunogen:	The immunogen is a synthetic peptide directed towards the middle region of human L3mbtl
Specificity:	<b>Expected reactivity:</b> Mouse <b>Homology:</b> Mouse: 100%
Formulation:	Liquid. Purified antibody supplied in 1x PBS buffer with 0.09% (w/v) sodium azide and 2% sucrose. <i>Note that this product is shipped as lyophilized powder to China customers.</i>
Concentration:	lot specific
Purification:	Affinity Purified
Conjugation:	Unconjugated
Storage:	For short term use, store at 2-8°C up to 1 week. For long term storage, store at -20°C in small aliquots to prevent freeze-thaw cycles.
Stability:	Shelf life: one year from despatch.
Predicted Protein Size:	91kDa
Gene Name:	I(3)mbt-like (Drosophila)
Database Link:	<a href="#">XP_900202</a> <a href="#">Entrez Gene 241764 Mouse</a> <a href="#">A2A5N8</a>
Background:	The function of this protein remains unknown.
Synonyms:	C630004G01; L3mbtl; mKIAA0681



[View online »](#)

**Product images:**

WB Suggested Anti-L3mbtl Antibody Titration:  
0.2-1 ug/ml  
ELISA Titer: 1:312500  
Positive Control: Mouse Small Intestine