

Product datasheet for **TA355894**

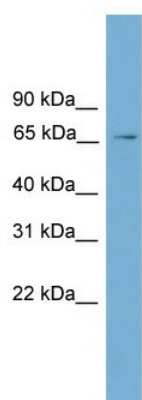
L3mbtl1 Rabbit Polyclonal Antibody

Product data:

Product Type:	Primary Antibodies
Applications:	WB
Reactivity:	Mouse
Host:	Rabbit
Clonality:	Polyclonal
Immunogen:	The immunogen is a synthetic peptide directed towards the middle region of human L3mbtl
Specificity:	Expected reactivity: Dog, Guinea Pig, Horse, Human, Mouse, Rabbit, Rat Homology: Dog: 77%; Guinea Pig: 93%; Horse: 92%; Human: 85%; Mouse: 100%; Rabbit: 85%; Rat: 100%
Formulation:	Liquid. Purified antibody supplied in 1x PBS buffer with 0.09% (w/v) sodium azide and 2% sucrose. <i>Note that this product is shipped as lyophilized powder to China customers.</i>
Concentration:	lot specific
Purification:	Affinity Purified
Conjugation:	Unconjugated
Storage:	For short term use, store at 2-8°C up to 1 week. For long term storage, store at -20°C in small aliquots to prevent freeze-thaw cycles.
Stability:	Shelf life: one year from despatch.
Predicted Protein Size:	67kDa
Gene Name:	l(3)mbt-like (Drosophila)
Database Link:	XP_485097 Entrez Gene 241764 Mouse A2A5N8
Background:	The function of this protein remains unknown.
Synonyms:	C630004G01; L3mbtl; mKIAA0681



[View online »](#)

Product images:

WB Suggested Anti-L3mbtl Antibody Titration:
0.2-1 ug/ml
Positive Control: Mouse Kidney