

## Product datasheet for **TA355893**

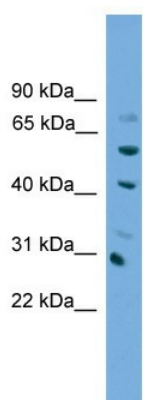
### Nkx1 Rabbit Polyclonal Antibody

#### Product data:

Product Type:	Primary Antibodies
Applications:	WB
Reactivity:	Mouse
Host:	Rabbit
Clonality:	Polyclonal
Immunogen:	The immunogen is a synthetic peptide directed towards the middle region of human Nkx1-1
Specificity:	<b>Expected reactivity:</b> Dog, Human, Mouse, Pig, Rat, Yeast, Zebrafish <b>Homology:</b> Dog: 82%; Human: 75%; Mouse: 100%; Pig: 75%; Rat: 79%; Yeast: 77%; Zebrafish: 75%
Formulation:	Liquid. Purified antibody supplied in 1x PBS buffer with 0.09% (w/v) sodium azide and 2% sucrose.
Concentration:	lot specific
Purification:	Affinity Purified
Conjugation:	Unconjugated
Storage:	For short term use, store at 2-8°C up to 1 week. For long term storage, store at -20°C in small aliquots to prevent freeze-thaw cycles.
Stability:	Shelf life: one year from despatch.
Predicted Protein Size:	61kDa
Database Link:	<a href="#">XP_144267</a> <a href="#">Entrez Gene 20232</a>
Background:	The function remains unknown.



[View online »](#)

**Product images:**

WB Suggested Anti-Nkx1-1 Antibody Titration:  
0.2-1 ug/ml  
Positive Control: NIH/3T3 cell lysate