

Product datasheet for **TA355892**

LOC100912020 Rabbit Polyclonal Antibody

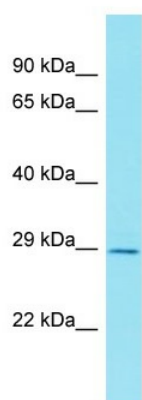
Product data:

Product Type:	Primary Antibodies
Applications:	WB
Reactivity:	Rat
Host:	Rabbit
Clonality:	Polyclonal
Immunogen:	The immunogen is a synthetic peptide directed towards the C-terminal region of Rat LOC100912020
Specificity:	Expected reactivity: Dog, Guinea Pig, Horse, Human, Mouse, Pig, Rat Homology: Dog: 86%; Guinea Pig: 79%; Horse: 86%; Human: 79%; Mouse: 100%; Pig: 86%; Rat: 93%
Formulation:	Liquid. Purified antibody supplied in 1x PBS buffer with 0.09% (w/v) sodium azide and 2% sucrose. <i>Note that this product is shipped as lyophilized powder to China customers.</i>
Concentration:	lot specific
Purification:	Affinity Purified
Conjugation:	Unconjugated
Storage:	For short term use, store at 2-8°C up to 1 week. For long term storage, store at -20°C in small aliquots to prevent freeze-thaw cycles.
Stability:	Shelf life: one year from despatch.
Predicted Protein Size:	28kDa
Gene Name:	homeobox D8
Database Link:	XP_003749540
Background:	The function of this protein remains unknown.



[View online »](#)

Product images:



Host: Rabbit
Target Name: LOC100912020
Sample Type: Rat Spleen lysates
Antibody Dilution: 1.0ug/ml