

## Product datasheet for **TA355889**

### Sox10 Rabbit Polyclonal Antibody

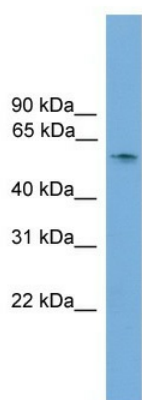
#### Product data:

Product Type:	Primary Antibodies
Applications:	WB
Reactivity:	Mouse
Host:	Rabbit
Clonality:	Polyclonal
Immunogen:	The immunogen is a synthetic peptide directed towards the N terminal region of human Sox10
Specificity:	<b>Expected reactivity:</b> Mouse
Formulation:	Liquid. Purified antibody supplied in 1x PBS buffer with 0.09% (w/v) sodium azide and 2% sucrose. <i>Note that this product is shipped as lyophilized powder to China customers.</i>
Concentration:	lot specific
Purification:	Affinity Purified
Conjugation:	Unconjugated
Storage:	For short term use, store at 2-8°C up to 1 week. For long term storage, store at -20°C in small aliquots to prevent freeze-thaw cycles.
Stability:	Shelf life: one year from despatch.
Predicted Protein Size:	63kDa
Gene Name:	SRY (sex determining region Y)-box 10
Database Link:	<a href="#">XP_128139</a> <a href="#">Entrez Gene 20665 Mouse</a> <a href="#">Q04888</a>
Background:	The function of this protein remains unknown.
Synonyms:	DOM; MGC15649; OTTHUMP00000195094; WS2E; WS4



[View online »](#)

Product images:



WB Suggested Anti-Sox10 Antibody Titration: 0.2-1 ug/ml  
Positive Control: SP2/O cell lysate