

Product datasheet for **TA355888**

Creb1 Rabbit Polyclonal Antibody

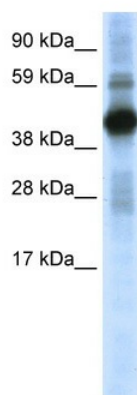
Product data:

Product Type:	Primary Antibodies
Applications:	WB
Reactivity:	Mouse
Host:	Rabbit
Clonality:	Polyclonal
Immunogen:	The immunogen is a synthetic peptide corresponding to a region of Mouse
Specificity:	Expected reactivity: Cow, Dog, Guinea Pig, Horse, Human, Mouse, Pig, Rabbit, Rat Homology: Cow: 93%; Dog: 93%; Guinea Pig: 86%; Horse: 93%; Human: 93%; Mouse: 100%; Pig: 100%; Rabbit: 93%; Rat: 100%
Formulation:	Liquid. Purified antibody supplied in 1x PBS buffer with 0.09% (w/v) sodium azide and 2% sucrose. <i>Note that this product is shipped as lyophilized powder to China customers.</i>
Concentration:	lot specific
Purification:	Affinity Purified
Conjugation:	Unconjugated
Storage:	For short term use, store at 2-8°C up to 1 week. For long term storage, store at -20°C in small aliquots to prevent freeze-thaw cycles.
Stability:	Shelf life: one year from despatch.
Predicted Protein Size:	38kDa
Gene Name:	cAMP responsive element binding protein 1
Database Link:	NP_034082 Entrez Gene 12912 Mouse Q01147
Background:	Creb1 binds the cAMP response element (CRE), a sequence present in many viral and cellular promoters. CREB stimulates transcription on binding to the CRE.
Synonyms:	CREB; CREB-1; MGC9284; OTTHUMP00000206660



[View online »](#)

Product images:



WB Suggested Anti-CREB1 Antibody Titration: 0.2-1 ug/ml
ELISA Titer: 1:312500
Positive Control: SP2/O cell lysate