

Product datasheet for **TA355887**

Fbxw7 Rabbit Polyclonal Antibody

Product data:

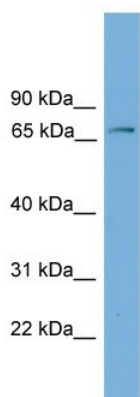
Product Type:	Primary Antibodies
Applications:	IHC, WB
Reactivity:	Mouse
Host:	Rabbit
Clonality:	Polyclonal
Immunogen:	The immunogen is a synthetic peptide directed towards the middle region of mouse Fbxw7
Specificity:	Expected reactivity: Cow, Dog, Guinea Pig, Horse, Human, Mouse, Rabbit, Rat, Zebrafish Homology: Cow: 93%; Dog: 93%; Guinea Pig: 93%; Horse: 93%; Human: 93%; Mouse: 100%; Rabbit: 93%; Rat: 100%; Zebrafish: 93%
Formulation:	Liquid. Purified antibody supplied in 1x PBS buffer with 0.09% (w/v) sodium azide and 2% sucrose. <i>Note that this product is shipped as lyophilized powder to China customers.</i>
Concentration:	lot specific
Purification:	Affinity Purified
Conjugation:	Unconjugated
Storage:	For short term use, store at 2-8°C up to 1 week. For long term storage, store at -20°C in small aliquots to prevent freeze-thaw cycles.
Stability:	Shelf life: one year from despatch.
Predicted Protein Size:	70kDa
Gene Name:	F-box and WD-40 domain protein 7
Database Link:	NP_536353 Entrez Gene 50754 Mouse Q8VBV4
Background:	Substrate recognition component of a SCF (SKP1-CUL1-F-box protein) E3 ubiquitin-protein ligase complex which mediates the ubiquitination and subsequent proteasomal degradation of target proteins. Probably recognizes and binds to phosphorylated target proteins. Involved in the degradation of cyclin-E, MYC, NOTCH1 released notch intracellular domain (NICD), and probably PSEN1.



[View online »](#)

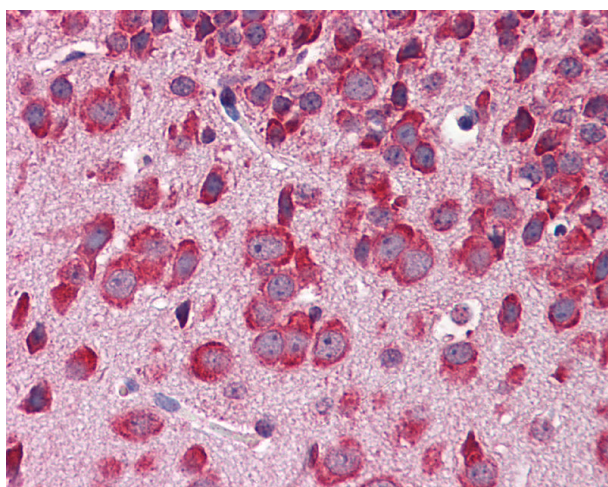
Synonyms:

AGO; CDC4; DKFZp686F23254; FBW6; FBW7; FBX30; FBXO30; FBXW6; FLJ11071; FLJ16457; hAgo; hCdc4; SEL-10; SEL10

Product images:


WB Suggested Anti-Fbxw7 Antibody Titration: 0.2-1 ug/ml

Positive Control: Mouse Lung



Mouse Brain