

Product datasheet for **TA355886**

Mef2c Rabbit Polyclonal Antibody

Product data:

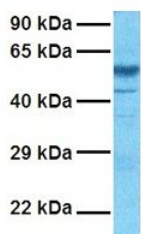
Product Type:	Primary Antibodies
Applications:	WB
Reactivity:	Human, Mouse
Host:	Rabbit
Clonality:	Polyclonal
Immunogen:	The immunogen is a synthetic peptide directed towards the N terminal region of mouse MEF2C
Specificity:	Expected reactivity: Cow, Dog, Horse, Human, Mouse, Pig, Rabbit, Rat, Zebrafish Homology: Cow: 86%; Dog: 100%; Horse: 86%; Human: 100%; Mouse: 100%; Pig: 100%; Rabbit: 100%; Rat: 100%; Zebrafish: 86%
Formulation:	Liquid. Purified antibody supplied in 1x PBS buffer with 0.09% (w/v) sodium azide and 2% sucrose. <i>Note that this product is shipped as lyophilized powder to China customers.</i>
Concentration:	lot specific
Purification:	Protein A purified
Conjugation:	Unconjugated
Storage:	For short term use, store at 2-8°C up to 1 week. For long term storage, store at -20°C in small aliquots to prevent freeze-thaw cycles.
Stability:	Shelf life: one year from despatch.
Predicted Protein Size:	48kDa
Gene Name:	myocyte enhancer factor 2C
Database Link:	NP_079558 Entrez Gene 4208 Human Entrez Gene 17260 Mouse Q8CFN5-4
Background:	MEF2C is a transcription regulator of slow fiber
Synonyms:	MEF2C



[View online »](#)

Product images:

MEF2C



Host: Rabbit

Target Name: MEF2C

Sample Type: Human Fetal Brain

Antibody Dilution: 1ug/ml

Host: Rabbit

Target Name: MEF2C

Sample Tissue: Human Fetal Brain

Antibody Dilution: 1.0ug/ml