

Product datasheet for **TA355883**

MLxipl Rabbit Polyclonal Antibody

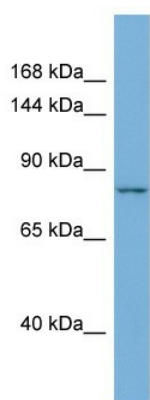
Product data:

Product Type:	Primary Antibodies
Applications:	WB
Reactivity:	Mouse
Host:	Rabbit
Clonality:	Polyclonal
Immunogen:	The immunogen is a synthetic peptide directed towards the N-terminal region of MOUSE MLxipl
Specificity:	Expected reactivity: Cow, Dog, Guinea Pig, Horse, Human, Mouse, Pig, Rabbit, Rat Homology: Cow: 85%; Dog: 92%; Guinea Pig: 92%; Horse: 92%; Human: 85%; Mouse: 100%; Pig: 100%; Rabbit: 92%; Rat: 93%
Formulation:	Liquid. Purified antibody supplied in 1x PBS buffer with 0.09% (w/v) sodium azide and 2% sucrose. <i>Note that this product is shipped as lyophilized powder to China customers.</i>
Concentration:	lot specific
Purification:	Affinity Purified
Conjugation:	Unconjugated
Storage:	For short term use, store at 2-8°C up to 1 week. For long term storage, store at -20°C in small aliquots to prevent freeze-thaw cycles.
Stability:	Shelf life: one year from despatch.
Predicted Protein Size:	78kDa
Gene Name:	MLX interacting protein-like
Database Link:	Entrez Gene 58805 Mouse Q99MZ3-4
Background:	MLxipl is a transcriptional repressor. It binds to the canonical and non-canonical E box sequences 5'-CACGTG-3'.
Synonyms:	bHLHd14; CHREBP; MIO; MONDOB; WBSCR14; WS-bHLH



[View online »](#)

Product images:



Host: Rabbit
Target Name: Mlxipl
Sample Type: Mouse Thymus lysates
Antibody Dilution: 1.0ug/ml