

Product datasheet for **TA355880**

Sp1 Rabbit Polyclonal Antibody

Product data:

Product Type:	Primary Antibodies
Applications:	WB
Reactivity:	Mouse
Host:	Rabbit
Clonality:	Polyclonal
Immunogen:	The immunogen is a synthetic peptide directed towards the C terminal region of mouse SP1
Specificity:	Expected reactivity: Dog, Horse, Human, Mouse, Pig, Rabbit, Rat Homology: Dog: 79%; Horse: 79%; Human: 79%; Mouse: 100%; Pig: 100%; Rabbit: 79%; Rat: 86%
Formulation:	Liquid. Purified antibody supplied in 1x PBS buffer with 0.09% (w/v) sodium azide and 2% sucrose. <i>Note that this product is shipped as lyophilized powder to China customers.</i>
Concentration:	lot specific
Purification:	Protein A purified
Conjugation:	Unconjugated
Storage:	For short term use, store at 2-8°C up to 1 week. For long term storage, store at -20°C in small aliquots to prevent freeze-thaw cycles.
Stability:	Shelf life: one year from despatch.
Predicted Protein Size:	86kDa
Gene Name:	trans-acting transcription factor 1
Database Link:	NP_038700 Entrez Gene 20683 Mouse O89090
Background:	SP1 is a transcription factor binds to GC box
Synonyms:	TSFP1

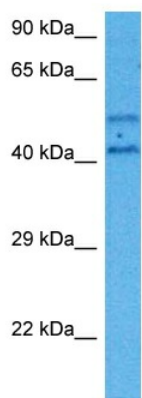


[View online »](#)

Product images:



WB Suggested Anti-SP1 Antibody Titration:
 2.5ug/ml
 ELISA Titer: 1:312500
 Positive Control: NIH/3T3 cell lysate



Host: Rabbit
 Target Name: Sp1
 Sample Type: Mouse Heart Lysate
 Antibody Dilution: 1.0µg/ml

Host: Mouse
 Target Name: SP1
 Sample Tissue: Mouse Heart
 Antibody Dilution: 1ug/ml