

Product datasheet for TA355877

Nr2c1 Rabbit Polyclonal Antibody

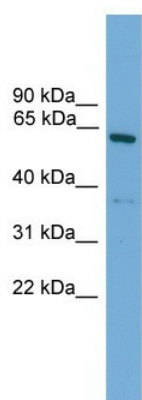
Product data:

Product Type:	Primary Antibodies
Applications:	WB
Reactivity:	Mouse
Host:	Rabbit
Clonality:	Polyclonal
Immunogen:	The immunogen is a synthetic peptide corresponding to a region of Mouse
Specificity:	Expected reactivity: Cow, Dog, Guinea Pig, Horse, Human, Mouse, Rat, Yeast Homology: Cow: 79%; Dog: 79%; Guinea Pig: 92%; Horse: 79%; Human: 79%; Mouse: 100%; Rat: 100%; Yeast: 90%
Formulation:	Liquid. Purified antibody supplied in 1x PBS buffer with 0.09% (w/v) sodium azide and 2% sucrose. <i>Note that this product is shipped as lyophilized powder to China customers.</i>
Concentration:	lot specific
Purification:	Affinity Purified
Conjugation:	Unconjugated
Storage:	For short term use, store at 2-8°C up to 1 week. For long term storage, store at -20°C in small aliquots to prevent freeze-thaw cycles.
Stability:	Shelf life: one year from despatch.
Predicted Protein Size:	65kDa
Gene Name:	nuclear receptor subfamily 2, group C, member 1
Database Link:	NP_035759 Entrez Gene 22025 Mouse Q8VIJ4
Background:	Nr2c1 is an orphan nuclear receptor. Nr2c1 represses transcription and binds DNA as a homodimer. Nr2c1 binds the IR7 element in the promoter of its own gene in an autoregulatory negative feedback mechanism.
Synonyms:	TR2; TR2-11



[View online »](#)

Product images:



WB Suggested Anti-Nr2c1 Antibody Titration: 0.2-1 ug/ml
ELISA Titer: 1:62500
Positive Control: Mouse Lung