

Product datasheet for **TA355876**

Stat5b Rabbit Polyclonal Antibody

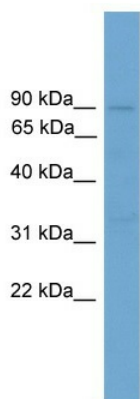
Product data:

| | |
|-------------------------|---|
| Product Type: | Primary Antibodies |
| Applications: | IHC, WB |
| Reactivity: | Human, Mouse |
| Host: | Rabbit |
| Clonality: | Polyclonal |
| Immunogen: | The immunogen is a synthetic peptide corresponding to a region of Mouse |
| Specificity: | Expected reactivity: Cow, Dog, Guinea Pig, Horse, Human, Mouse, Rabbit, Rat, Zebrafish Homology: Cow: 85%; Dog: 77%; Guinea Pig: 100%; Horse: 92%; Human: 100%; Mouse: 100%; Rabbit: 100%; Rat: 100%; Zebrafish: 83% |
| Formulation: | Liquid. Purified antibody supplied in 1x PBS buffer with 0.09% (w/v) sodium azide and 2% sucrose. <i>Note that this product is shipped as lyophilized powder to China customers.</i> |
| Concentration: | lot specific |
| Purification: | Affinity Purified |
| Conjugation: | Unconjugated |
| Storage: | For short term use, store at 2-8°C up to 1 week. For long term storage, store at -20°C in small aliquots to prevent freeze-thaw cycles. |
| Stability: | Shelf life: one year from despatch. |
| Predicted Protein Size: | 90kDa |
| Gene Name: | signal transducer and activator of transcription 5B |
| Database Link: | NP_035619 Entrez Gene 6777 Human Entrez Gene 20851 Mouse P42232 |
| Background: | Stat5b carries out a dual function: signal transduction and activation of transcription. Stat5b binds to the GAS element and activates PRL-induced transcription. |
| Synonyms: | STAT5 |

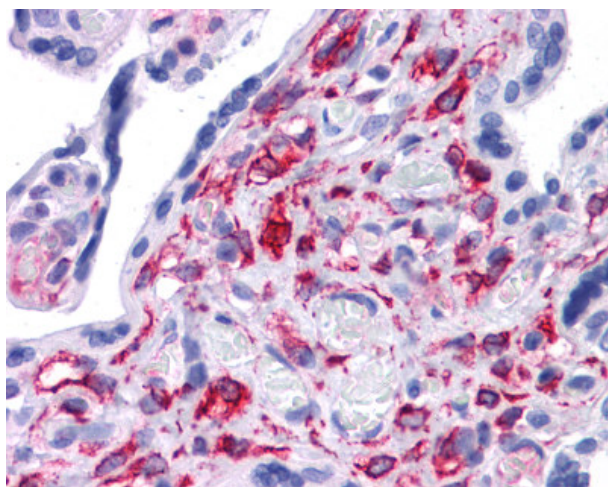


[View online »](#)

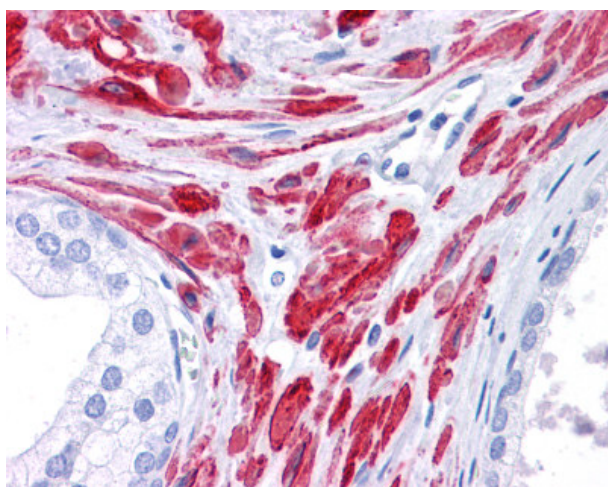
Product images:



WB Suggested Anti-Stat5b Antibody Titration: 1 ug/ml
Positive Control: Mouse Thymus



Human Prostate



Human Prostate